



**SOT** | Society of  
Toxicology  
**ENDOWMENT**  
*Investing in the Future ...*



**SOCIETY OF TOXICOLOGY**  
**ENDOWMENT**  
**ANNUAL REPORT**  
**2008–2009**

*Investing in the Future  
of Toxicology*

**SOT** | Society of  
Toxicology  
Creating a Safer and Healthier World  
by Advancing the Science of Toxicology

# Endowment Fund Board

## 2008–2009 SOT ENDOWMENT FUND BOARD

**Roger O. McClellan**, \* SOT President, 1989–1990, Chair/Member (2006–2009)

**Jon C. Cook**, \* SOT Councilor, 2002–2004, Member (2007–2010)

**George B. Corcoran**, SOT President, 2007–2008, Member (2008–2010)

**Norbert E. Kaminski**, SOT Treasurer, 2005–2007, Member (2007–2011)

**James E. Klaunig**, SOT Treasurer, 2003–2005, Member (2006–2009)

**James A. Popp**, SOT President, 2006–2007, Member (2006–2009)

**Jacqueline H. Smith**, \* SOT Treasurer, 1999–2001, Member (2008–2011)

*\*SOT Presidential Appointee*

### *Ex-Officio*

**Kenneth S. Ramos**, SOT President, 2008–2009

**William Slikker, Jr.**, SOT Treasurer, 2007–2009

**Shawn Douglas Lamb**, SOT Executive Director

### *Legal Counsel*

**William C. Hays**, Esq.

### *Staff Support*

**Clarissa Russell Wilson**, SOT Deputy Executive Director

## 2009–2010 SOT ENDOWMENT FUND BOARD

**Jacqueline H. Smith**, \* SOT Treasurer, 1999–2001, Chairperson/Member (2008–2011)

**George B. Corcoran**, SOT President, 2007–2008, Member (2008–2010)

**Norbert E. Kaminski**, SOT Treasurer, 2005–2007, Member (2007–2011)

**Kenneth S. Ramos**, SOT President, 2008–2009, Member (2009–2011)

**William Slikker, Jr.**, SOT Treasurer, 2007–2009, Member (2009–2013)

**Robert G. Tardiff**, \* Member (2009–2010), Replaces Jon Cook, SOT President-Elect (2009–2010)

**James S. Woods**, \* SOT Councilor (1990–1992), Member (2009–2012)

*\*SOT Presidential Appointee*

### *Ex-Officio*

**Cheryl Lyn Walker**, SOT President, 2009–2010

**Lawrence R. Curtis**, SOT Treasurer, 2009–2011

**Shawn Douglas Lamb**, SOT Executive Director

### *Legal Counsel*

**William C. Hays**, Esq.

### *Staff Support*

**Clarissa Russell Wilson**, SOT Deputy Executive Director

## SOT ENDOWMENT FUND BOARD CHAIRPERSON MESSAGE

It's an honor to be a part in the formation and operation of the SOT Endowment Fund. As a former SOT treasurer, I remember looking at many worthy programs and requests for operating funds with no new sources of revenue to keep our budget balanced. Often difficult choices needed to be made on how to fund new initiatives while maintaining equally worthy existing programs. The formation of the SOT Endowment finally provided the way to create a new and stable significant source of income.

The Endowment Fund consisted of 24 Specific Purpose Funds and 4 General Purpose Funds on June 30, 2009, our fiscal year-end. We are grateful to those who contributed financial support and leadership in creating 5 new specific purpose funds, and to the 250 individuals, families, and organizations who generously donated nearly \$150,000 to the SOT Endowment Fund during this challenging economic time. We thank the SOT Council who authorized a "SOT 50th Anniversary Match" that doubled the impact of each contribution. As a result, we now have 21 Specific Purpose Endowment Funds that meet the criteria of permanently restricted by having contributions totaling \$25,000 or more.

Although most investments did not grow last year, the SOT Endowment Fund Portfolio with a total loss of 18.22% fared slightly better than the Standard & Poor benchmark loss of 19.50% for the interval of July 1, 2008 to June 30, 2009. As a result, the SOT Endowment Fund had total assets of \$869,256 on June 30, 2009.

Nevertheless, over \$10,000 in awards were made to 22 individuals (mostly students and postdocs) from 12 Permanently Restricted Specific Purpose Endowment Funds at the SOT 2009 Annual Meeting in Baltimore. Likewise, for the SOT 2010 Annual Meeting, the Endowment Fund Board again authorized expenditures of up to 4% from the 21 Permanently Restricted Specific Purpose Funds to provide awards at the SOT 2010 Annual Meeting.

As you read this Annual Report, we hope you see our optimism for the SOT Endowment Fund, the enthusiasm of the 2009 awardees, and a collective commitment to investing in the future of the SOT that has played such a meaningful part in our lives. We ask that you consider the wide array of gifting options available and make a personally meaningful contribution to the Endowment Fund. Every gift helps us grow the Endowment Fund and your gift has twice the impact as long as the "SOT 50<sup>th</sup> Anniversary Match" is available. Your contribution will help the SOT Endowment Fund reach the one million dollar threshold of contributions and matching funds, a testimonial to the generosity of toxicologists and other supporters of the science of toxicology.

On behalf of the SOT Endowment Fund Board and the entire Society, we thank all contributors to the SOT Endowment Fund. We're also grateful to Roger McClellan and his tireless leadership in advancing the SOT Endowment Fund and to the numerous SOT members, committees, groups, and Headquarters staff who have supported the Endowment Fund Awards and process. Your commitment and generosity, especially during this challenging economic time, will help nurture the Society's second half century of achievement in advancing the science of toxicology.



Jacqueline H. Smith

A handwritten signature in black ink that reads "Jacqueline H. Smith". The signature is fluid and cursive.

Jacqueline H. Smith  
Chairperson, SOT Endowment Fund Board

***Consider a Specific Fund within the  
SOT Endowment as a gifting option—  
help build the financial future of the SOT!***

## SOT ENDOWMENT FUND OVERVIEW

The SOT Endowment Fund has a **mission** of assisting in advancing the science of toxicology by providing financial support for the Society’s programs. The **vision** for the SOT Endowment Fund is to establish and increase in net worth a set of Endowment Funds that will provide significant, stable, long-term financial support that complements the Society’s revenue from dues and other sources, to aid in achieving the Society’s strategic objectives. **Management** of the Society’s Endowment Fund is vested with an Endowment Fund Board. All actions related to the Endowment Fund originate with the Endowment Fund Board and are subject to ratification by the SOT Council. Responsibility for investing the assets of the SOT Endowment Fund is vested with the SOT Finance Committee with input from the SOT Endowment Fund Board. Additional information about the SOT Endowment Fund and history can be found at [www.toxicology.org/ai/csot/contribute.asp](http://www.toxicology.org/ai/csot/contribute.asp).

## RECOGNITION LEVELS

Tiered recognition levels have been developed to encourage contributions to the Endowment Fund.

### Individual Contributions

Contributions of \$40 or more are acknowledged in the SOT Endowment Fund Annual Report and other SOT publications unless the donor has asked to remain anonymous. All contributions, irrespective of the amount, are acknowledged in writing. In the case of couples who are both members of the SOT, the **Recognition Level** is based on the contribution of each individual. Thus, a \$500 joint contribution from a couple who are both members of the SOT is recognized for each individual at the **Gold Level** and a \$1,000 joint contribution is recognized for each individual at the **Paracelsus Circle Level**.

Individuals are designated as **Lifetime Members of the Paracelsus Circle** when they contribute \$5,000 within 10 years or make an initial contribution of \$500 or more and indicate their intention to make additional contributions to reach \$5,000 or more within 10 years. Individuals who make cumulative gifts of \$10,000 or more are identified as **Benefactors**.

INDIVIDUAL CONTRIBUTIONS	
Recognition Level	Contribution in a Fiscal Year
Paracelsus Circle	\$500 or more
Gold	\$250–\$499
Silver	\$100–\$249
Bronze	\$40–\$99

## Corporate/Institutional Recognition

Corporate/Institutional Recognition Levels for the SOT Endowment Fund are the same as those used by the SOT for corporate contributors to the Annual Meeting and are shown here:

CORPORATE/INSTITUTIONAL CONTRIBUTIONS	
Recognition Level	Contribution in a Fiscal Year
Diamond	\$10,000 or more
Platinum	\$5,000–\$9,999
Gold	\$2,500–\$4,999
Silver	\$1,000–\$2,499

## TYPES OF ENDOWMENT FUNDS

The SOT Endowment Fund consists of two basic types of Funds. **Permanently Restricted Net Asset Funds** have donor-imposed restrictions on the use of the Funds, which are maintained and used in perpetuity for donor identified purposes that are consistent with the long-term interests of the Society. The Endowment Fund Board has initially established \$25,000 as a minimum threshold to create a Permanently Restricted Fund. The minimum threshold may be contributed by one or more donors as well as SOT and/or Employer Matching Funds, and it must be contributed within three years. If the level is not achieved within three years, the Fund will become a Temporarily Restricted Net Asset Fund. The SOT Endowment Fund Board has initially approved the annual release of an amount equal to 4% of the fiscal year-end assets of each Permanently Restricted Net Asset Fund to be used in the following fiscal year for the purposes for which each fund was established. It is anticipated that investment income will allow each fund, over a period of years, to grow at the rate of inflation or better, thus increasing the assets of each fund and the amount available for use to support the purpose for which the fund was established.

**Temporarily Restricted Net Asset Funds** have donor imposed purpose and time restrictions on the use of the Funds. The Endowment Fund Board has initially established \$10,000 as a minimum threshold to create a Temporarily Restricted Fund. The minimum threshold may be contributed by one or more donors as well as SOT and/or Employer Matching Funds, and it must be contributed within three years. If the minimum is not achieved, the contributed funds will be released for use consistent with the stated purpose of the donors. The total assets of a Temporarily Restricted Net Asset Fund typically will be expended over a period of 10 years or less.

Either type of Fund can be created by a contribution from one or several donors who identify the purpose for which they would like to see the proceeds from the fund used. The initial donor(s) may elect to leave the fund open to receive additional contributions from other individuals or elect to restrict the fund to their initial contribution and perhaps their intended subsequent contributions.

## A FAMILY OF FUNDS

The SOT Endowment Fund is in reality a family of Funds of two major types: General Purpose Funds and Specific Purpose Funds. This structure is intended to recognize that the Society of Toxicology has multiple needs and that prospective donors (SOT members, friends of SOT, or organizations) have varied interests in which they would like to support. In response to these needs and interests, a family of Funds has been created that is expected to grow over time.

## GENERAL PURPOSE FUNDS

The four **General Purpose Funds** are aligned with the long-term strategic priorities of the SOT as described below. When these General Purpose Funds were created, it was anticipated that they would soon attract sufficient contributions such that they would be designated as Permanently Restricted Net Asset Funds and continued in perpetuity. Thus far, the Education and SOT Priority Needs Funds have met that goal.

**Education Fund**—Educational activities have been a cornerstone of the SOT since its founding. Early activities focused on graduate education. Later educational efforts expanded to include postdoctoral fellow training and continuing education. More recently, activities have been expanded to include kindergarten through grade 12 education of the public. Proceeds from this Fund will be used, at the discretion of the SOT Council, to enhance focused targets of opportunity for enhancing the SOT's educational initiatives.

**International Activities Fund**—The SOT has always had a strong international orientation and been open to members from around the world. Today, one of every 8 members of the SOT are from outside the U.S. attesting to the international nature of the Society. Science, including the science of toxicology, had global dimensions long before it became fashionable to refer to a global economy. Proceeds from this Fund will be used, at the discretion of the SOT Council, to help the Society provide global leadership for advancing the science of toxicology.

**SOT Priority Needs Fund**—The proceeds from this Fund will be used to create a margin of excellence in advancing priority needs of SOT and advancing the science of toxicology as identified by the SOT Council.

**Student Travel Fund**—From the early years of the SOT to the present, there has been strong support from the SOT membership for assisting in meeting the costs of student participation in SOT meetings. Hundreds of students, many of them now leaders in the SOT, attended their first SOT meeting with support provided by the Society. There is still a great need for support for student travel. The proceeds from this Fund, at the discretion of the SOT Council, can help meet that need on a targeted basis.

## SPECIFIC PURPOSE FUNDS

The **Specific Purpose Funds** have been created as specified by the donor(s) for specific purposes that are consistent with the long-term interests of the Society and are listed in alphabetical order. The names of the Funds may reflect the purpose and/or may include the name of the initiating donor (an individual, a family, or an organization) or the name of an individual that a donor or group of donors would like to honor. The name and purpose of each Specific Purpose Fund must be approved by the Endowment Fund Board and ratified by the SOT Council. The selection of awardees for each fund is aligned with a SOT Committee, Specialty Section, or Special Interest Group. Current Specific Purpose Funds are briefly described below. Additional information is available at [www.toxicology.org/ai/csot/contribute.asp](http://www.toxicology.org/ai/csot/contribute.asp).

The number of Specific Purpose Funds within the SOT Endowment Fund has steadily grown since the creation of the Endowment in early 2007. We now have 24 Specific Purpose Funds, 21 of which are designated as Permanently Restricted. The individual Specific Purpose Funds are listed in alphabetical order.



### Mary Amdur Student Award Fund

(Established October 2007)

This Fund was initiated by students and colleagues of the late Mary Amdur to memorialize her substantial contributions to the science of inhalation and respiratory toxicology and encourage students to pursue a career in this field. Proceeds from the Mary Amdur Student Award Fund are used to provide stipends that accompany the student awards of the Inhalation and Respiratory Specialty Section, with which this fund is aligned. Mary Amdur was a pioneer in conducting research to understand the effects of exposure to airborne sulfur dioxide and sulfate aerosols. She is the only woman to have received the SOT's prestigious Merit Award.

**J. Grace Wallenborn**, University of North Carolina, was selected as the 2009 Mary Amdur Student awardee for her research showing that zinc, one of the most common metals associated with particulate matter in the air, was able to reach the heart following pulmonary exposure. *"This made my hypothesis that zinc may directly exert toxic effects on the heart following pulmonary exposure plausible."*



## Young Soo Choi Student Scholarship Award Fund

(Established July 2008)

The Young Soo Choi Student Scholarship Award Fund was initiated with a generous gift from Young Soo Choi. Proceeds from the Fund will be used to provide a scholarship for graduate training in toxicology to a Korean student (having been born in Korea or, if born in the United States, having one or more parents of Korean descent). The Scholarship will serve to memorialize the commitment of Young Soo Choi to higher education and her contributions to the field of toxicology.



Laxman S. Desai

## **NEW** Laxman S. Desai Association of Scientists of Indian Origin Student Award Fund

(Established January 2009)

This Fund was initiated with a generous gift from Laxman S. Desai to provide support for awards that encourage graduate students and postdoctoral fellows, who are of Indian origin, to pursue advanced studies in the field of toxicology. Proceeds from the Fund will be used to cover travel expenses to the SOT Annual Meeting or best paper awards based on abstracts accepted for presentation at the SOT Annual Meeting. Dr. Desai has had a distinguished career as a scientist and businessman. He was born in India and received his university training in toxicology/pharmacology in Belgium, and immigrated to the United States in 1967.



## **NEW** Diversity Initiatives Fund

(Established January 2009)

The Diversity Initiatives Fund was created to provide proceeds for enhancing the strategic growth initiatives of the SOT aimed at increasing and retaining individuals from groups under-represented in the field of toxicology. The initiatives may include, but will not be limited to: (a) Funding more students to attend the flagship annual Undergraduate Education Program for Minority Students; (b) Funding to allow students to extend their stay at the Annual Meeting longer than two nights, allowing them the opportunity to attend more scientific sessions; and (c) Broadening and deepening the institutional outreach to more institutions with significant enrollment of under-represented individuals. Award recipients will be selected by the Committee on Diversity Initiatives.

## Founders Fund

(Established September 2007)

The Founders Fund was created to recognize the uniquely valuable contributions of those professionals who organized and devoted their creative energies and time to the establishment of this Society and whose vision provided the foundation for vital contributions aimed at the protection of public health worldwide. The Founders Fund was initiated with financial contributions from individual members of the Society of Toxicology whose careers were shaped in large measure by the vision and professional contributions of the Society's founders. Proceeds from the Founders Fund are used to provide a cash stipend to be given to the recipient of the SOT Founders Award selected annually by the SOT Awards Committee.

**Roger O. McClellan** was selected to receive the 2009 Founders Award based on his outstanding leadership and accomplishments, all centered on understanding the effects of chemicals as a basis for minimizing human health risks. His extensive experience in the fields of radiation, inhalation, and chemical toxicology have led to noteworthy publications and he has received many SOT awards for scientific achievements (Frank Blood, Arnold J. Lehman, and Merit).



Angelo Furgiuele

## Angelo Furgiuele Young Investigator Technology Award Fund

(Established July 2008)

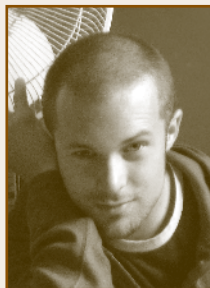
The Angelo Furgiuele Young Investigator Technology Award Fund was created with an initial generous gift from Angelo and Christine Furgiuele. Proceeds from the Fund will be awarded to a Young Investigator in the field of reproductive and developmental toxicology to purchase technological enhancements such as computer hardware, software, or analytical equipment that will facilitate the conduct of research by the award recipient.



**Perry J. Gehring  
Biological Modeling  
Student Award Fund**  
(Established July 2008)

This Fund was created with initial generous contributions from the family of the late Perry J. Gehring and his long-time friends, Joe and Teri LeBeau to honor the legacy of Perry J. Gehring. Proceeds from this fund will be used for awards to encourage students to pursue careers that utilize biological modeling to advance the science of toxicology. The biological modeling research conducted by Perry and his colleagues on vinyl chloride remains a classic example of the important role of biological modeling in understanding human risks of chemicals.

**Marc-André Verner**, Université du Québec a Montréal, received the 2009 Perry J. Gehring Biological Modeling Student Award for his Ph.D. research, which involves physiologically-based pharmacokinetic modeling of persistent organic pollutants in infants exposed through breast-feeding. *“Receiving this award is very stimulating and supporting for the continuation of my Ph.D. project.”*



**Perry J. Gehring Diversity  
Student Travel Award Fund**  
(Established July 2008)

This Fund was created to honor the legacy of Perry J. Gehring and to encourage students from ethnic groups under-represented in toxicology to pursue careers in toxicology. Proceeds from the Fund will be used to fund one or more awards to be given to students from an ethnic group under-represented in toxicology (African American, Hispanic, Native American, or Pacific Islander) thereby assisting the award recipients in their participation in the Annual Meeting of the Society of Toxicology. Perry J. Gehring encouraged individuals from ethnic groups under-represented in the sciences to enter the field and, especially, the biomedical sciences and toxicology. Award recipients will be selected by the Committee on Diversity Initiatives.

**Vanessa De La Rossa**, University of Texas at El Paso, received the 2009 Perry J. Gehring Diversity Student Travel Award for her poster entitled “Bioluminescent Bacteria as Biosensors for Polycyclic Aromatic Hydrocarbons.”



**Perry J. Gehring  
Risk Assessment Student Award Fund**  
(Established July 2008)

This Fund was created to honor the legacy of Perry J. Gehring and to encourage students to pursue careers that utilize modern toxicological science in risk assessment. The Fund was created with initial generous gifts from Barbara Gehring and children and Joe and Teri LeBeau to memorialize Perry J. Gehring’s contributions to toxicology. Proceeds from the Fund will be used to provide stipends to student recipients of awards given for excellence in Risk Assessment. Perry Gehring, who served as President of the SOT (1980–1981), had a distinguished career as a toxicologist and was a pioneer in advancing the science of risk-based decision making.

**Mathieu Valcke**, Université de Montréal, received the 2009 Perry J. Gehring Best Graduate Student Risk Assessment Award for his work on inter-individual variability in the body’s capacity to eliminate toxicants once exposed in various scenarios. *“This award gives me a certain credibility that I did not have before. It might help me once the time comes for me to justify my research interests.”*



**Scott Auerbach**, National Institute of Environmental Health Sciences, received the 2009 Perry J. Gehring Best Postdoc Risk Assessment Award for his research to develop gene-expression-based pattern recognition models that are capable of differentiating between (hepatic) carcinogens and non-carcinogens based on the genomic changes they elicit after exposure durations of 90 days or less. He plans to use this award to “fuel” future toxicogenomics meetings where studies will be designed to follow-up the one presented at the 2009 SOT Annual Meeting.



Harry W. Hays

**NEW** Harry W. Hays  
Memorial Fund  
(Established May 2009)

This Fund was established in the memory of Harry W. Hays (1909–2001), who was a founder of the Society of Toxicology and the Society’s fourth President (1964–1965). The fund was created with an initial generous gift from his nephew and SOT Legal Counsel, William C. Hays, Esq. Proceeds from the fund will be used annually to further the objectives of either or both the Society’s Education Fund or SOT Priority Needs Fund as determined by the SOT Council and, to the extent feasible, be identified as having been funded by the Harry W. Hays Memorial Fund. Dr. Hays played a vital role in documenting the history of the Society through its first 25 years.

**Health and Environmental Science Institute  
Immunotoxicology Young Investigator Student  
Award Fund**

(Established July 2008)

This Fund was created with an initial generous gift from the International Life Sciences Institute (ILSI)—Health and Environmental Sciences Institute (HESI), to advance the education and training of young investigators in the field of immunotoxicology. Proceeds from the Fund will be used to provide travel stipends to meritorious applicants to assist in their attendance and participation in the Annual Meeting of the Society of Toxicology.



Elizabeth K.  
Weisburger

Vera W. Hudson and  
Elizabeth K. Weisburger  
Scholarship Fund  
(Established October 2007)

The Vera W. Hudson and Elizabeth K. Weisburger Scholarship Fund was created with a generous gift from Elizabeth K. Weisburger, a long-time member of the SOT, to honor the memory of her deceased long-time friend and professional associate, Vera W. Hudson. Proceeds from this Fund will be used to fund scholarships for individuals, with preference to women, pursuing graduate studies in toxicology. Vera was a biologist and information specialist at the National Library of Medicine (NLM) for many years; she had an important role in developing the NLM Hazardous Substances Data Bank and other sources of toxicology information on chemicals. Elizabeth has also purchased a Charitable Gift Annuity with the Vera W. Hudson and Elizabeth K. Weisburger Scholarship Fund named as the beneficiary. The Scholarship Fund is open to receive contributions from other donors who would like to honor Vera and Elizabeth and encourage women in the field of toxicology.

**Courtney Kozul**, Dartmouth Medical School, received the 2009 Hudson/Weisburger Scholarship Fund Award for her research on the effects of chronic low dose exposure to drinking water arsenic and immune response to infection in the lung. She plans to continue toxicology research that will “*embrace multidisciplinary approaches to solving complex environmental health problems and preventing human disease.*”





**Frank C. Lu**  
**Food Safety Student Award Fund**  
*(Established November 1998)*

This Frank C. Lu Food Safety Student Award Fund, was created with an initial generous contribution from Frank C. Lu, a charter member of the SOT. Proceeds from the Fund are used for the stipends that accompany student awards of the Food Safety Specialty Section. These awards have served to foster the interest of students in food safety issues.



**Roger O. McClellan**  
**Student Award Fund**  
*(Established October 2007)*


This Fund was created with an initial generous gift from Roger and Kathleen McClellan to encourage individuals trained in Veterinary Medicine to pursue careers in biomedical research including comparative toxicology and pathology. Proceeds from the Fund will provide cash stipends to award recipients selected on the basis of the scientific merit of papers proposed for presentation at the Annual Meeting. Special consideration will be given to research on the role of comparative medicine in evaluating the safety/risks of exposure to chemicals or physical agents. Dr. McClellan received his DVM from Washington State University, and spent his entire career in biomedical research with emphasis on inhalation toxicology and human health risk analysis drawing on his training in comparative medicine. He is the Founding Chairman of the SOT Endowment Fund Board.

**Natalie Johnson**, Texas A&M University, received the 2009 Frank C. Lu Food Safety Student Award. This award helped Ms. Johnson attend the 2009 SOT Annual meeting and present her research on the measurement of urinary biological markers of exposure to food-borne and environmental carcinogens in human populations.



*"This award has supported the building of relationships and collaborations among scientists in fields connected to international food safety. By networking with researchers in the Food Safety Specialty Section, I have been able to expand on my current knowledge. I plan to remain actively involved in this important area."*

**Amuzie Chidozie**, Michigan State University, received the 2009 Roger O. McClellan Student Award for his studies on the most common food borne trichothecene mycotoxin (Deoxynivalenol). He hopes his work will lead to identification of novel biomarkers of effect for chronic low-dose human exposures to environmental chemicals. *"Such biomarkers might be critical tools for epidemiological surveillance, thus enhancing human risk assessment and disease prevention. Because I received this award, I was introduced to Drs. McClellan, Barlow, Gabrielson, and other senior colleagues who have similar interests and expressed enthusiasm to support me as I pursue my scientific career."*




**Jean Lu Student Scholarship Award Fund**  
*(Established July 2008)*

The Jean Lu Student Scholarship Award Fund was established with an initial generous gift from Frank C. Lu, a charter member of the SOT, in memory of his wife, Jean Lu. Proceeds from the fund will provide a lump sum scholarship each year to a Chinese student (having been born in China or, if born in the United States, having one or more parents of Chinese descent), who is interested in graduate training in toxicology.



### Harihara Mehendale Association of Scientists of Indian Origin Student Award Fund

(Established July 2008)

This Fund was created with an initial generous gift from Harihara and Rekha Mehendale. Proceeds from the Fund will be used to fund Awards that will encourage graduate students and Postdoctoral Fellows, who are individuals of Indian origin, to pursue advanced studies in the field of toxicology. Harihara Mehendale is an outstanding toxicologist and is well known for his role in teaching and mentoring students.



### Emil A. Pfitzer Drug Discovery Student Award Fund

(Established January 2008)

This Fund was created with initial generous contributions from Hoffmann-LaRoche, the Research Institute for Fragrance Materials (RIFM), and the family and friends of Emil Pfitzer to honor the legacy of Emil A. Pfitzer. Proceeds from this Fund will be used for awards to well-qualified students applying modern toxicology to enhancing the discovery of new drugs and ensuring their safety. Emil A. Pfitzer (1929–2007) was an active member of the Society of Toxicology and served as the Society’s 25th President (1985–1986). He was an internationally recognized toxicologist whose scientific career spanned academia and industry.

**Mamta Behl**, Purdue University, received a Mehendale/Singh ASIO Student Award in 2009 based on research assessing the effects of lead exposure on the exacerbation of Alzheimer’s disease. Receiving this award allowed her to attend the SOT 2009 Annual Meeting and brought *“an unparalleled opportunity to be exposed to research in my field.”*



**Gayathri Chadalapaka**, Texas A & M University, received a Mehendale/Singh ASIO Award in 2009 for the poster entitled, *“Inhibition of Epidermal Growth Factor Receptor (EGFR) in Bladder Cancer Cells by Curcumin and Betulinic Acid.”*



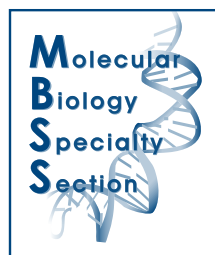
**Yogesh Saini**, Michigan State University, received a Mehendale/Singh ASIO Award in 2009 for research on environmental pollutants like metals and ozone. *“Receiving this award was one of the most rewarding moments in my career. I felt enthused and motivated to pursue my ongoing research goals with even more strength and perseverance.”*

**Jamie O’Brien-Barnard**, University of Rochester, 2009 First Place Emil A. Pfitzer Drug Discovery Student Award recipient for her thesis work demonstrating that the small lipid molecule, 15d-PGJ2, stimulates platelet production by inducing reactive oxygen species in megakaryocytes. *“This award encourages me to pursue greater endeavors in translational research beyond graduate school and inspires me to continue to work hard to challenge myself. In the future, I hope to advance the science of toxicology by developing models to study environmental effects in the context of systems biology.”*



**Jennifer Cohen**, University of Arizona, 2009 Second Place Emil A. Pfitzer Drug Discovery Student Award recipient for her abstract titled *“The Tumor Suppressor Gene TSC-2 Modulates Translation Initiation of Cyclin D1 Through ERK Crosstalk with 4EBP1.”*

**Arunkumar Asaithambi**, Iowa State University, 2009 Third Place Emil A. Pfitzer Drug Discovery Student Award recipient for his research on a novel signal transduction cascade in Parkinson’s disease model, which may open up new possibilities for drug discovery in Parkinson’s disease. *“This is really an exciting time in my Ph.D. This award motivates me to be perseverant in my research and to explore new ideas that might contribute to the growing body of knowledge.”*



### Molecular Biology Student Award Fund (Established October 2007)

This fund was created with a generous gift from Thomas R. Sutter when he was Vice President of the Molecular Biology Specialty Section. Proceeds from the Fund will provide cash stipends to accompany student awards given by the Molecular

Biology Specialty Section at each SOT Annual Meeting. Award recipients will be selected based on scientific merit.

## Regulatory and Safety Evaluation Student Awards Fund

(Established October 2007)

The Regulatory and Safety Evaluation Specialty Section is in the early stages of developing a Fund with the proceeds to be used to support stipends to accompany student awards given by the Specialty Section at the SOT Annual Meeting.

## **NEW** Renal Toxicology Fellowship Award Fund

(Established December 2008)

The Renal Toxicology Fellowship Award Fund was established by a group of SOT members who have actively conducted research on the mechanisms of renal toxicity for many years. Proceeds from this fund will provide stipends for students and postdoctoral fellows for continued advancement of the field of renal toxicology through mechanistic research, with preference for applicants within the first three years of training to conduct research in this area.



Robert J. Rubin

## Robert J. Rubin Student Travel Award Fund

(Established July 2008)

The Robert J. Rubin Student Travel Fund was initiated by a generous gift from Mark R. Montgomery, one of his former students. Proceeds will be used to provide travel awards to one or more graduate students to participate in the Annual SOT Meeting. Recipients of this award will be selected by a committee jointly appointed by the leadership of the Mechanisms Specialty Section and the Risk Assessment Specialty Section. Dr. Rubin, Professor Emeritus, Environmental Health Sciences, Johns Hopkins University Bloomberg School of Public Health, had a distinguished career in toxicology and an important role in the education of many toxicologists and environmental health scientists.



Dharm V. Singh

## Dharm V. Singh Association of Scientists of Indian Origin Student Award Fund

(Established February 2008)

This fund was created with an initial generous gift from Dharm Singh to provide awards to students of Indian Origin to encourage them to pursue a career in toxicology. Dharm Singh is a distinguished toxicologist with three decades of service at the U.S. Environmental Protection Agency and has provided leadership for the development and growth of the Association of Scientists of Indian Origin Special Interest Group.

**Smita Salian**, National Institute for Research on Reproductive Health, Mumbai, India, received a Mehendale/Singh ASIO Student Award in 2009. *"This award holds more significance as it comes from a group of distinguished Indian scientists in this country. It gave me the courage and much needed help to come, attend, and present my work to the largest gathering of toxicologists from around the world. The work she presented is a part of her Ph.D. research on the study of the toxic effects of a ubiquitously present endocrine disruptor, Bisphenol A (commonly found in plastics), on the reproductive system."*



**Raja Settivari**, Indiana School of Medicine, received a Mehendale/Singh ASIO Student Award in 2009 for research on genetic and biochemical aspects of Parkinson's disease and manganism using *C. elegans* as the model organism. *"For my budding career as a scientist, this award means a lot and it is a great encouragement and honor."*



## **NEW** Dharm V. Singh Carcinogenesis Award Fund

(Established April 2009)

The Dharm V. Singh Carcinogenesis Award Fund was created with a generous contribution by Dharm Singh in memory of his wife, Sita Singh. Proceeds from this Fund will be used to encourage students and postdoctoral fellows to pursue careers in research that will lead to a better understanding of the causes of cancer and improved diagnosis and treatment of this disease.



Carl C. Smith

### Carl C. Smith Student Mechanisms Award Fund (Established March 1983)

This Fund was created in large part through the leadership and financial support of Carl C. Smith and his wife, Thelma. Through the years, the proceeds of the Fund have provided the financial stipends that have accompanied student awards of the Mechanisms Specialty Section, awards given in recognition of excellence to encourage students to conduct research on mechanisms of action of toxic agents. Many past recipients of Carl C. Smith Student Awards are now key participants in the activities of the Society of Toxicology.

**Jingui Fu**, Hamner Institutes for Health Sciences, RTP, North Carolina. First Place 2009 Carl C. Smith awardee for his research on the mechanisms of Type 2 Diabetes caused by environmental arsenic exposure. The results of the research, "Low-level Inorganic Arsenite Impairs Glucose-stimulated Insulin Secretion in Pancreatic Beta-cells: Involvement of Nrf2-mediated Antioxidant Response," may advance preventive measures and treatment strategies for the environmental oxidative stressor-induced diabetes. *"I was excited and encouraged to work harder after I received the Carl C. Smith Award and I realized no pain, no gains."*



**Hongfei Zhou**, University of Colorado, Denver, was the Carl C. Smith Second Place awardee. Mr. Zhou said, *"This award recognized my work on benzene toxicity in human bone marrow endothelium as outstanding research. It is a great encouragement for my further study in toxicology and human health prevention. I am sure that this award will have more positive impacts on me in the future."*

**Liang Chen**, University of Cincinnati. Third Place 2009 Carl C. Smith awardee for research on the role of the mitogen-activated protein kinase (MAPK) pathway in hexavalent chromium induced toxicity, including the acute cytotoxicity as well as the inhibition of murine embryonic stem cell differentiation.



*"I was greatly encouraged after receiving the award. In the future, I hope that I can continuously make contributions to expand our understanding of the molecular mechanisms of health problems caused by environmental pollutants."*



**Karen Thomas**, University of Utah. Third Place 2009 Carl C. Smith awardee for her research investigated the potential role of the capsaicin receptor TRPV1 in lung cell death and acute lung injury using cell culture and knock-out animal experimental techniques. *"Putting together the award application helped me pursue*

*my research because I needed to organize my work and recognized additional experiments to clarify my research."*

**Sanjeeva Wijeyesakere**, University of Michigan, Third Place 2009 Carl C. Smith awardee for her poster "Structural Insight into Inhibition/Aging of Neuropathy Target Esterase (NTE) from X-ray Crystal Studies of Its Catalytic Domain Homologue, Patatin-17 (PAT27)."

### **NEW** Ronald G. Thurman Student Travel Award Fund

(Established August 2009)



Ronald G. Thurman

The Ronald G. Thurman Student Travel Award was established with an initial generous pledge of funds from former students of Dr. Thurman, who played a significant role in furthering the toxicology graduate program at the University of North Carolina at Chapel Hill. Proceeds from this Fund will be used to provide travel awards to one or more graduate students to participate in the SOT Annual Meeting. Dr. Thurman made important contributions to applying mechanistic toxicology to the areas of ethanol metabolism and toxicity, xenobiotic metabolism, liver transplantation, hepatocarcinogenesis, and hepatobiology. The award recipient(s) will be selected on the basis of the scientific quality of the abstract of a presentation that applies biochemical, pharmacological and/or toxicological techniques to questions of interest in mechanistic toxicology.

# Financial Summary

## SOT ENDOWMENT FUND FINANCIAL SUMMARY FOR 2008–2009 (unaudited)

July 1, 2008–June 30, 2009

Fund (*Funds not yet Permanently Restricted)	Fund Balance 7/1/2008	Contributions	SOT Match	Disbursements	Net Return	Fund Balance 6/30/2009
<b>General Purpose Funds</b>						
Education Fund	\$29,982	\$4,476*	\$4,502		(\$4,342)	\$34,618
*International Activities Fund	10,548	3,245	3,245		(1,900)	15,138
SOT Priority Needs Fund	80,469	12,175	12,175		(11,689)	93,130
*Student Travel Fund	20,446	1,300*	1,350		(2,581)	20,515
<b>Specific Purpose Funds</b>						
Mary Amdur Student Award Fund	26,331	4,000	4,000	(375)	(3,787)	30,169
Young Soo Choi Student Scholarship Award Fund	9,407	7,750	7,750		(2,777)	22,130
Laxman S. Desai Association of Scientists of Indian Origin Student Award Fund		12,500	12,500		(2,788)	22,212
Diversity Initiatives Fund		15,745*	15,695		(3,500)	27,940
Founders Fund	84,428	1,000	1,000		(9,638)	76,790
*Angelo Furgiuele Young Investigator Technology Award Fund	4,044	3,385	3,385		(1,206)	9,608
Perry J. Gehring Biological Modeling Student Award Fund	29,583	250	250		(3,146)	26,937
Perry J. Gehring Diversity Student Travel Award Fund	26,103	825	825	(984)	(2,891)	23,878
Perry J. Gehring Risk Assessment Student Award Fund	28,013	1,050	1,050	(1,000)	(3,039)	26,074
*Harry W. Hays Memorial Fund		8,500	8,500		(1,896)	15,104
Health and Environmental Science Institute Immunotoxicology Young Investigator Student Award Fund		14,875	14,875		(3,318)	26,433
Vera W. Hudson and Elizabeth K. Weisburger Scholarship Fund	53,762	1,184	1,284*	(2,000)	(6,047)	48,183
Frank C. Lu Food Safety Student Award Fund	27,916	50	50		(3,124)	24,892
Jean Lu Student Scholarship Award Fund		12,500	12,500		(2,788)	22,212
Roger O. McClellan Student Award Fund	53,180	4,925*	4,475	(2,000)	(6,700)	53,880
Harihara Mehendale Association of Scientists of Indian Origin Student Award Fund	22,684	1,825	1,825	(750)	(2,853)	22,731
Molecular Biology Student Award Fund	16,133	4,325	4,325		(2,764)	22,019
Emil A. Pfitzer Drug Discovery Student Award Fund	53,263	1,350	1,350		(6,241)	49,722
*Regulatory and Safety Evaluation Student Awards Fund	941	2,150	2,150		(584)	4,657
Renal Toxicology Fellowship Award Fund		13,250	13,250		(2,955)	23,545
Robert J. Rubin Student Travel Award Fund	24,244	1,651	1,651		(3,072)	24,474
Dharm V. Singh Association of Scientists of Indian Origin Student Award Fund	24,693	500	500	(750)	(2,781)	22,162
Dharm V. Singh Carcinogenesis Award Fund		12,500	12,500		(2,788)	22,212
Carl C. Smith Student Mechanisms Award Fund	61,289	1,775	4,096*	(2,400)	(7,224)	57,536
*Ronald G. Thurman Student Travel Award Fund						
Other Designations		200	200		(45)	355
<b>TOTALS</b>	<b>\$687,459</b>	<b>\$149,261</b>	<b>\$151,258</b>	<b>(\$10,259)</b>	<b>**(\$108,464)</b>	<b>\$869,256</b>

\*Differentials due to year-end contributions and matches recognized in different financial years.

\*\*=Round \$(1)

# Honor Roll of Contributors

The SOT Endowment Fund Board, on behalf of the entire membership of the Society of Toxicology, gratefully acknowledges the generosity of the many donors who made contributions to the SOT Endowment Fund.

## LIFETIME CONTRIBUTION BENEFACTORS

### Cumulative contributions of \$10,000 or more

Young Soo Choi	Harihara M. and Rekha Mehendale
Laxman Desai	Mark R. Montgomery
Barbara Gehring and Family	James A. and Gloria Jean Popp
Joe and Teri LeBeau	Dharm V. Singh
Frank C. Lu and Family	Carl C. Smith and Family
Roger O. and Kathleen M. McClellan	Elizabeth K. Weisburger

## PARACELTUS CIRCLE LIFETIME MEMBERS

### Cumulative contributions of \$5,000 or more

John and Vera Doull	Jacqueline H. Smith	Robert G. Tardiff
William C. Hays	Thomas R. Sutter	James S. Woods
Curtis and Cherry Klaassen		

## INDIVIDUAL CONTRIBUTORS

## PARACELTUS CIRCLE LIFETIME MEMBERS

### An initial contribution of \$500 or more and a commitment to make cumulative contributions of \$5,000 or more within a 10-year period.

Anonymous Donor	Michael A. Gallo	John B. Morris
Daniel and Patricia Acosta	Donald E. and Elly Gardner	Robert E. and Ursula Osterberg
Linda S. and David Birnbaum	Peter L. Goering	Catherine and Martin Philbert
Matthew S. and Renee Bogdanffy	Russellyn Carruth and Bernard D. Goldstein	Betty C. Pyne
Brad Bolon	Charles H. Hobbs	Kenneth S. Ramos
Joseph F. and Mary Borzelleca	Michael and Mona Holsapple	Charles F. Reinhardt
Balbir S. Brar	Jerry B. Hook	Rick G. Schnellmann
Dennis J. and Leigh Ann Burns Naas	Rudolph J. and Susan Jaeger	I. Glenn Sipes
Steven D. and Elly Cohen	James E. and Lisa Klaunig	William and Cristine Slikker
Jon C. and Judith R. Cook	Herman F. Kraybill	Robert J. Staab
George B. and Anna Karen Corcoran	Gary L. Lage	Cheryl Lyn Walker
David L. and Janet Eaton	Shawn D. Lamb	Kendall B. and Gail Ann Wallace
Paul W. and Grace Ferguson	Nancy A. Monteiro-Riviere	Clarissa and Tim Wilson
Bruce A. Fowler		
Angelo and Christine Furguele		

## PARACELTUS CIRCLE CONTRIBUTORS

### \$500 or more in 2008–2009

Anonymous Donor	Larry Fechter and Tom Stansbury	James W. Newberne
Michael and Lisa Aleo	Jay I. Goodman	Raja Mangipudy and Prathibha Rao
Kim Boekelheide and Janet Austin	Ronald N. Hines and D. Gail McCarver	Donald and Caron Reed
Susan J. Borghoff	Elaine V. Knight	Robert A. Scala
Janice E. Chambers	Robert I. Krieger	Andrew M. Standeven
Lung-Chi Chen	Serrine S. Lau	Joan B. Tarloff
Jin Ho Chung	Ji-Eun Lee	Monica A. Valentovic and Gary O. Rankin
Harvey J. Clewell	Lois D. Lehman-McKeeman	John E. Whalan
Brian S. Cummings	Jose E. Manautou	Ronald K. and Mary Wolff
Uday S. Devanaboyina	Kenneth E. McMartin	
Michael L. Dourson	Terrence James Monks	
Marion F. Ehrich	Joyce K. Nelson	

# Honor Roll of Contributors

## GOLD ENDOWMENT CONTRIBUTORS

\$250–\$499 in 2008–2009

Anonymous Donor	Anthony M. Ndifor
Norman J. and Valerie G. Barlow	Jean F. Regal
Jeanine L. Bussiere	John H. and Joan E. Richburg
Betty J. Eidemiller	Denise Robinson Gravatt
Tae-Won Kim	Peter A. Valberg
Walter J. Kozumbo	Women in Toxicology Special Interest Group
Edward A. Lock	

## SILVER ENDOWMENT CONTRIBUTORS

\$100–\$249 in 2008–2009

Anonymous Donors	Donald A. Fox	Charles A. Miller
William E. Bechtold	Yvonne Frater	Richard A. Parent
Barbara D. Beck	A. Jay Gandolfi	Richard W. Pfeifer
Arthur A. Bickford	Hank and Sherry Gardner	Annette C. Rohr
Robert E. Chapin	Nancy A. Gillett	Harry Salem
Woon-Gye Chung	Michael J. Graziano	Katie Sprugel
Daniel L. Costa	Sidney Green	Mari S. Stavanja
Edmond E. Creppy	Philip H. Howard	Weiyi Su
Lawrence R. Curtis	Michael F. Hughes	James G. Wagner
Kimberly D. Daniel	Perry Kurtz	Myra L. Weiner
Andrew Ebert	Jie Liu	Stacie L. Wild
Gregory L. Finch	Joe Mauderly	Michael J. Winrow
Mike Foster	Sharon A. Meyer	Morris S. Zedeck

## BRONZE ENDOWMENT CONTRIBUTORS

\$40–\$99 in 2008–2009

Tiffini K. Brabham	Taehyeon M. Cho	James H. Kim
Jaya Chilakapati	Pamela L. Heard	Carole A. Kimmel

## INSTITUTIONAL CONTRIBUTORS

### DIAMOND CONTRIBUTORS

\$10,000 or more

ILSI Health and Environmental Sciences Institute  
Pfizer Global R&D  
SOT 50<sup>th</sup> Anniversary Match

### PLATINUM CONTRIBUTORS

\$5,000–\$9,999

N/A

### GOLD CONTRIBUTORS

\$2,500–\$4,999

Eastman Charitable Foundation

### SILVER CONTRIBUTORS

\$1,000–\$2,499

Formaldehyde Council, Inc.  
General Electric  
Johnson & Johnson Foundation

## EMPLOYERS MATCHING EMPLOYEE CONTRIBUTIONS

Amgen Foundation	Merck Partnership for Giving
Bristol-Myers Squibb Foundation	Pfizer Foundation Matching Gifts Program
Kimberly Clark Foundation	

# Contributions by Fund

## GENERAL PURPOSE FUNDS

### EDUCATION FUND CONTRIBUTORS

Amgen Foundation	Perry J. Kurtz <i>in Memory of Dr. Jon Wetzel</i>
Barbara D. Beck	Gary L. Lage
Herman A. Birnbaum	Merck Partnership for Giving
Matthew S. and Renee Bogdanffy	Sharon A. Meyer
Bristol-Myers Squibb Foundation	Joyce K. Nelson
Steven D. and Elly Cohen	James A. and Gloria Jean Popp
Paul W. and Grace Ferguson	Harry Salem
Donald A. Fox	William and Cristine Slikker
A. Jay Gandolfi	SOT 50 <sup>th</sup> Anniversary Match
Michael J. Graziano	Katie Sprugel
Carole A. Kimmel	Robert J. Staab
Elaine V. Knight	Stacie L. Wild

### INTERNATIONAL ACTIVITIES FUND CONTRIBUTORS

Steven D. and Elly Cohen	Bruce A. Fowler	I. Glenn Sipes
George B. and Anna Karen Corcoran	Michael and Mona Holsapple	William and Cristine Slikker
Michael L. Dourson	Jie Liu	SOT 50 <sup>th</sup> Anniversary Match
Larry Fechter and Tom Stansbury	Jose E. Manautou	

### SOT PRIORITY NEEDS FUND CONTRIBUTORS

Daniel and Patricia Acosta	Russellyn Carruth and Bernard D. Goldstein	Charles F. Reinhardt
Anonymous Donors	William C. Hays	Jacqueline H. Smith
Kim Boekelheide and Janet Austin	Ronald N. Hines and D. Gail McCarver	Andrew M. Standeven <i>in Honor of Roger P. Smith</i>
Susan J. Borghoff	Jerry B. Hook	Andrew M. Standeven <i>in Memory of Karen E. Watterhahn</i>
Robert E. Chapin	Gary L. Lage	SOT 50 <sup>th</sup> Anniversary Match
Steven D. and Elly Cohen	Richard W. Pfeifer	Clarissa and Tim Wilson
David L. and Janet Eaton	Catherine and Martin Philbert	Michael J. Winrow
Michael A. Gallo	James A. and Gloria Jean Popp	Morris S. Zedeck
Peter L. Goering	Donald and Caron Reed	

### STUDENT TRAVEL FUND CONTRIBUTORS

Matthew S. and Renee Bogdanffy	Gary L. Lage	SOT 50 <sup>th</sup> Anniversary Match
Janice E. Chambers	William and Cristine Slikker	

## SPECIAL PURPOSE FUNDS

### MARY AMDUR STUDENT AWARD FUND CONTRIBUTORS

Anonymous Donors	Nancy A. Gillett	Peter A. Valberg
Lung-Chi Chen	Joe Mauderly	James G. Wagner
Steven D. and Elly Cohen	John B. Morris	John E. Whalan
Daniel L. Costa	Annette C. Rohr	Ronald K. and Mary Wolff
Gregory L. Finch	SOT 50 <sup>th</sup> Anniversary Match	
Mike Foster	Weiyi Su	

# Contributions by Fund

## YOUNG SOO CHOI STUDENT SCHOLARSHIP AWARD FUND CONTRIBUTORS

Taehyeon M. Cho	Tae-Won Kim	Betty C. Pyne
Young S. Choi <i>in Memory of Mr. and Mrs. Jung Wook Choi</i>	Ji-Eun Lee	SOT 50 <sup>th</sup> Anniversary Match
Woon-Gye Chung	Roger O. and Kathleen M. McClellan	Clarissa and Tim Wilson
James H. Kim	<i>in Honor of Young Soo Choi</i>	

## LAXMAN S. DESAI ASSOCIATION OF SCIENTISTS OF INDIAN ORIGIN STUDENT AWARD FUND CONTRIBUTORS

Laxman S. Desai <i>in Memory of Anasuya</i>	SOT 50 <sup>th</sup> Anniversary Match
--	--

## DIVERSITY INITIATIVES FUND CONTRIBUTORS

Daniel and Patricia Acosta	Betty J. Eidemiller	Anthony M. Ndifor
Michael and Lisa Aleo	Yvonne Frater	Pfizer Global R&D
Tiffini K. Brabham	Pamela L. Heard	Denise Robinson Gravatt
George B. and Anna Karen Corcoran	Johnson & Johnson Foundation	SOT 50 <sup>th</sup> Anniversary Match
Kimberly D. Daniel	Jose E. Manautou	Mari S. Stavanja
Marion F. Ehrich	Charles A. Miller	Myra L. Weiner

## FOUNDERS FUND CONTRIBUTORS

James W. Newberne	SOT 50 <sup>th</sup> Anniversary Match
-------------------	--

## ANGELO FURGIUELE YOUNG INVESTIGATOR TECHNOLOGY AWARD FUND CONTRIBUTORS

Susan J. Borghoff	Angelo and Christine Furgiuele	SOT 50 <sup>th</sup> Anniversary Match
Andrew G. Ebert <i>in Honor of Dr. Joseph Borzelleca</i>	Betty C. Pyne	

## PERRY J. GEHRING BIOLOGICAL MODELING STUDENT AWARD FUND CONTRIBUTORS

Jay I. Goodman	SOT 50 <sup>th</sup> Anniversary Match
----------------	--

## PERRY J. GEHRING DIVERSITY STUDENT TRAVEL AWARD FUND CONTRIBUTORS

Anonymous Donor <i>in Honor of Bob and Diane Higginbotham</i>	Betty J. Eidemiller Sidney Green	Robert I. Krieger SOT 50 <sup>th</sup> Anniversary Match
---	-------------------------------------	---

## PERRY J. GEHRING RISK ASSESSMENT STUDENT AWARD FUND CONTRIBUTORS

Matthew S. and Renee Bogdanffy Harvey J. Clewell	Jay I. Goodman Robert I. Krieger	SOT 50 <sup>th</sup> Anniversary Match
---	-------------------------------------	--

## HARRY W. HAYS MEMORIAL FUND CONTRIBUTORS

Eastman Charitable Foundation William C. Hays	Shawn D. Lamb Robert A. Scala	SOT 50 <sup>th</sup> Anniversary Match
--	----------------------------------	--

## HEALTH AND ENVIRONMENTAL SCIENCE INSTITUTE IMMUNOTOXICOLOGY YOUNG INVESTIGATOR STUDENT AWARD FUND CONTRIBUTORS

Amgen Foundation	ILSI Health and Environmental Sciences Institute	Jean F. Regal
Anonymous Donor	Pfizer Foundation Matching Gifts Program	SOT 50 <sup>th</sup> Anniversary Match
Dennis J. and Leigh Ann Burns Naas		
Jeanine L. Bussiere		

# Contributions by Fund

## VERA W. HUDSON AND ELIZABETH K. WEISBURGER SCHOLARSHIP FUND CONTRIBUTORS

Amgen Foundation	SOT 50 <sup>th</sup> Anniversary Match	Women in Toxicology Special Interest Group <i>in Honor of Elizabeth K Weisburger</i>
Philip H. Howard	Katie Sprugel	
Sharon A. Meyer	Stacie L. Wild	
James A. and Gloria Jean Popp		

## FRANK C. LU FOOD SAFETY STUDENT AWARD FUND CONTRIBUTORS

Andrew G. Ebert <i>in Honor of Dr. Joseph Borzelleca</i>	SOT 50 <sup>th</sup> Anniversary Match
--	--

## JEAN LU STUDENT SCHOLARSHIP AWARD FUND CONTRIBUTORS

Frank C. Lu	SOT 50 <sup>th</sup> Anniversary Match
-------------	--

## ROGER O. MCCLELLAN STUDENT AWARD FUND CONTRIBUTORS

Norman J. and Valerie G. Barlow	Charles H. Hobbs	James A. and Gloria Jean Popp
William E. Bechtold	Robert I. Krieger	SOT 50 <sup>th</sup> Anniversary Match
Arthur A. Bickford	Roger O. McClellan <i>in Honor of My Fellow SOT Endowment Board Members</i>	Peter A. Valberg
Brad Bolon		Ronald K. and Mary Wolff
Balbir S. Brar		

## HARIHARA MEHENDALE ASSOCIATION OF SCIENTISTS OF INDIAN ORIGIN STUDENT AWARD FUND CONTRIBUTORS

Jaya Chilakapati	Robert I. Krieger	Raja Mangipudy and Prathibha Rao <i>in Honor of H. M. Mehendale</i>
Lawrence R. Curtis	Linda Malley <i>in Honor of Harihara M. Mehendale</i>	SOT 50 <sup>th</sup> Anniversary Match
Uday S. Devanaboyina		
Kimberly Clark Foundation		

## MOLECULAR BIOLOGY STUDENT AWARD FUND CONTRIBUTORS

Formaldehyde Council, Inc.	Ronald N. Hines and D. Gail McCarver	SOT 50 <sup>th</sup> Anniversary Match
General Electric	John H. and Joan E. Richburg	Thomas R. Sutter

## EMIL A. PFIZER DRUG DISCOVERY STUDENT AWARD FUND CONTRIBUTORS

Matthew S. and Renee Bogdanffy	Robert E. and Ursula Osterberg	SOT 50 <sup>th</sup> Anniversary Match
Jon C. and Judith R. Cook	James A. and Gloria Jean Popp	

## REGULATORY AND SAFETY EVALUATION STUDENT AWARD FUND CONTRIBUTORS

Andrew G. Ebert <i>in Honor of Dr. Joseph Borzelleca</i>	Richard A. Parent <i>in Memory of Mildred Christian</i>	SOT 50 <sup>th</sup> Anniversary Match
Robert E. and Ursula Osterberg		

## RENAL TOXICOLOGY FELLOWSHIP AWARD FUND CONTRIBUTORS

Michael and Lisa Aleo	Kenneth E. McMartin	Jacqueline H. Smith <i>in Memory of William O. Berndt</i>
Brian S. Cummings	Terrence James Monks	Joan B. Tarloff
Jerry B. Hook <i>in Memory of William O. Berndt</i>	Pfizer Foundation Matching Gifts Program	Monica A. Valentovic and Gary O. Rankin
Serrine S. Lau	Kenneth S. Ramos	SOT 50 <sup>th</sup> Anniversary Match
Lois D. Lehman-McKeeman	Rick G. Schnellmann	Cheryl Lyn Walker
Edward A. Lock		

# Contributions by Fund

## ROBERT J. RUBIN STUDENT TRAVEL AWARD FUND CONTRIBUTORS

Anonymous Donor  
Jin Ho Chung

Hank and Sherry Gardner  
Rudolph J. Jaeger

Walter J. Kozumbo  
SOT 50<sup>th</sup> Anniversary Match

## DHARM V. SINGH ASSOCIATION OF SCIENTISTS OF INDIAN ORIGIN STUDENT AWARD FUND CONTRIBUTORS

Balbir S. Brar

SOT 50<sup>th</sup> Anniversary Match

## DHARM V. SINGH CARCINOGENESIS AWARD FUND CONTRIBUTORS

Dharm V. Singh

SOT 50<sup>th</sup> Anniversary Match

## CARL C. SMITH MECHANISMS STUDENT AWARD FUND CONTRIBUTORS

Matthew S. and Renee Bogdanffy  
George B. and Anna Karen Corcoran  
A. Jay Gandolfi

Michael F. Hughes  
Jose E. Manautou  
Donald and Caron Reed

John H. and Joan E. Richburg  
SOT 50<sup>th</sup> Anniversary Match  
Kendall B. Wallace

## OTHER DESIGNATIONS: TOXICOLOGISTS OF AFRICAN ORIGIN CONTRIBUTORS

Edmond E. Creppy

Michael L. Dourson

SOT 50<sup>th</sup> Anniversary Match

## RECOGNITION OF OTHERS

### IN HONOR OF JOSEPH BORZELLECA

Andrew G. Ebert

### IN HONOR OF YOUNG SOO CHOI

Roger O. and Kathleen M. McClellan

### IN HONOR OF BOB AND DIANE HIGGINBOTHAM

Anonymous Donor

### IN HONOR OF HARIHARA M. MEHENDALE

Linda Malley  
Raja Mangipudy and Prathibha Rao

### IN MEMORY OF ANASUYA

Desai Laxman

### IN MEMORY OF WILLIAM O. BERNDT

Jerry B. Hook  
Jacqueline H. Smith

### IN MEMORY OF MR. AND MRS. JUNG WOOK CHOI

Young S. Choi

### IN HONOR OF MY FELLOW SOT ENDOWMENT BOARD MEMBERS

Roger O. McClellan

### IN HONOR OF ROBERT J. RUBIN

Mark R. Montgomery

### IN HONOR OF ROGER P. SMITH

Andrew M. Standeven

### IN HONOR OF ELIZABETH K. WEISBURGER

Women in Toxicology Special Interest Group

### IN MEMORY OF MILDRED CHRISTIAN

Richard A. Parent

### IN MEMORY OF KAREN E. WATTERHAHN

Andrew M. Standeven

### IN MEMORY OF JON WETZEL

Perry J. Kurtz



**SOT** | Society of  
Toxicology  
**ENDOWMENT**  
*Investing in the Future ...*



**THE SOT SEAL WAS CREATED BY LOUISE SHAFFER,  
WIFE OF C. BOYD SHAFFER, A FOUNDER OF THE SOCIETY**

Theme: “Safety and Protection from Poison Through  
Increasing Knowledge”

SALUS—Latin for “Safety”

The Ribband—A token of pre-eminence or superiority

The Arrow—Toxicum (Latin for poison arrow)

The Shield—Protection

The Wreath—Symbol of success

Radiating Lines—Force manifesting itself: Victory over ignorance

**SOCIETY OF TOXICOLOGY**

*1821 Michael Faraday Drive, Suite 300, Reston, VA 20190*

*Tel: (703) 438-3115 Fax: (703) 438-3113*

*E-mail: [sothq@toxicology.org](mailto:sothq@toxicology.org)*

**[www.toxicology.org](http://www.toxicology.org)**