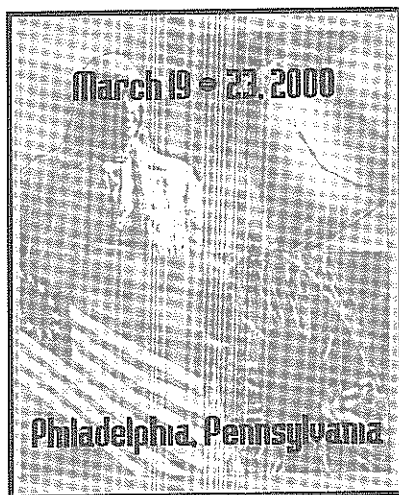


Communiqué

Summer 1999

Call for Abstracts



Our 2000 Annual Meeting is scheduled for March 19-23, 2000 in Philadelphia, Pennsylvania. SOT expects this meeting to be greater than ever. A Preliminary Information Packet, including abstract, registration, and travel forms, was sent to members in July. Abstracts are due **October 1, 1999**. (See article on page 14 describing the **electronic abstract submission system**.)

The five-day program includes a continuing education program, a plenary lecture, and other special sessions, symposia, workshops, roundtable discussions, and platform and poster presentations, as well as three days of exhibitions.

Continued to page 6

Preview: 2000 Annual Meeting

A diverse and exciting program of quality science is promised for the 2000 Annual Meeting in Philadelphia, Pennsylvania, March 19-23. A large number of excellent scientific session proposals were submitted for the meeting. The Continuing Education Committee is preparing 17 choices for the continued professional development of toxicologists, including two one-hour "sunrise" courses. The Program Committee has tentatively accepted 18 symposia, 11 workshops, and 2 roundtable sessions.

SOT especially recognizes Specialty Section officers and members for recruiting, developing and sponsoring timely proposals for the scientific sessions that are critical to the meeting's success.

NEWS IN THIS ISSUE

Women in Toxicology	3
Council Evaluates Consumers Union's Toxicity Index	6
Gillette Corporation Kicks Off TEF Corporate Campaign	9
CE Speakers Available to Regional Chapters	11
Try SOT's Electronic Abstract Submission System	14

Student Advisory Committee Approved

SOT Council has approved the formation of a Student Advisory Committee. This committee will provide an additional line of communication between students and SOT Council.

Initiated July 1, 1999, the Student Advisory Committee was approved for a 3-year period. At the end of this initial period, Council will evaluate the situation and decide to: a) not continue this Committee; b) continue the Committee on an ad hoc basis for an additional period of time; or c) consider proposing a revision to the by-laws to make this a standing committee. A member of Council will be designated as liaison to this Committee, and at this time **Jay Goodman** will serve in this capacity.

This Committee shall consist of a student representative selected by each of the Regional Chapters. The student representative must be a member of SOT or have his/her completed application for student membership submitted to the Membership Committee by October 1 of the year preceding the SOT Annual Meeting at which they will represent their Regional Chapter.



Jay I. Goodman, Ph.D.
1999-2000 President of the
Society of Toxicology

FUTURE SOT ANNUAL MEETINGS

- 2000: March 19-23
Philadelphia,
Pennsylvania
- 2001: March 25-29
San Francisco,
California
- 2002: March 17-21
Nashville,
Tennessee
- 2003: March 16-20
Salt Lake City,
Utah

INSIDE

Awards	7
Member News	9
Animals In Research	10
Placement Services	12-13
Upcoming Conferences	15
Media Of Interest	15
Council Highlights	16

PRESIDENT'S MESSAGE

LOOKING AHEAD TO A PRODUCTIVE YEAR THROUGH ENHANCED COMMUNICATION

I am confident that the Society of Toxicology will enjoy a most productive year in 1999-2000 – thus continuing a long series of good years that have seen the enhancement of both our Society and toxicological sciences. There are several developments of which I would like to make you aware. *First*, the formation of a Student Advisory Committee to Council has been approved. This group will meet with Council at the Annual Meeting with the overall goal being to open a line of communication between Council and our future leaders. This Committee will consist of a student representative from each of our Regional Chapters. The Chapter Presidents have been asked to put in place a procedure for selecting student representatives so that this Committee can be active at the time of our meeting in 2000. *Second*, Council approved the formation of a Working Group on Women in Toxicology (WIT). This will be chaired by **Gina Pastino** who organized the initial meeting of the group that was held during our Annual Meeting last March. WIT's primary objectives are to increase opportunities for networking and mentoring. *Third*, on May 27, 1999, we had a meeting of the chairs of our committees and task forces to discuss their priorities for 1999-2000, and this information was used to finalize their budgets. The committees and task forces will be given wide latitude to work towards accomplishing their goals for the year. I plan to highlight some of the committee/task force activities in future President's Messages. However, at this time, I would like to tell you that the enhancement of our web site is one of our more important goals. The World Wide Web Task Force, chaired by **Jon Mirsalis**, is addressing this project in a creative and diligent fashion, building upon the successes this Task Force has already achieved. *Fourth*, we are in the final stages of drafting a Membership Survey so that Council can garner your views on a wide range of issues that affect our Society. You will be receiving more information about the survey in the near future and I urge you to respond. We want to hear your views. As you can see, Council is placing a high priority on staying in touch with, and being responsive to, the membership.

I have seen the initial listing of symposia, workshops, roundtables, issues session and continuing education courses scheduled to be presented at our 2000 Annual Meeting in Philadelphia. Indeed, this is an impressive collection of high-quality scientific presentations and I am confident that our 2000 Annual Meeting will be very successful. The science at our Annual Meeting is the foundation of the SOT. Clearly, the Program Committee, chaired by **Dan Acosta** and the Continuing Education Committee, chaired by **Judy Zelikoff** are doing their jobs extraordinarily well. Of course, it is you, the membership, who I compliment most for your submissions of innovative, cutting-edge proposals.

In the context of the discussion above, concerning the scientific presentations at our Annual Meeting, it is important to reflect upon the very significant role that effective communication plays. We understand that one does not really "do science" until it is published and the presentation of our laboratory results at scientific meetings is a key aspect of education and peer review. There are also a variety of opportunities, e.g., the Forum Section of *Toxicological Sciences*, where one can publish scholarly reviews of scientific issues. An additional aspect of communication that should be higher on our priority list is the need to do more with regard to speaking out in support of the scientific basis of toxicology. This is particularly important in light of a concept referred to as the "**precautionary principle**" that is being discussed more widely these days. In essence, the "precautionary principle" says that if

a hazard is associated with a particular chemical then measures should be taken to avoid or minimize such threats (i.e., increased regulation) without really taking fundamental aspects of toxicology, e.g., dose-response relationships, into account. In other words, some may simply say that risk assessment is not needed, hazard identification is all that is required. I do not believe this is appropriate. What makes research in toxicology exciting to me is the combination of the theoretical with the practical. That is, research aimed at discerning the mechanism of action of the chemical of interest very often enhances our understanding of basic aspects of biology. At the same time, information is provided that is pertinent to key aspects of risk assessment, e.g., dose-response relationships, and species to species extrapolation issues. Basic research leading to an enhanced understanding of the mechanism/mode of action of the chemical of interest provides the basis upon which more rational approaches to risk assessment may be built. In my view, we should be more vigorous with regard to speaking out in support of the scientific basis of toxicology and the use of sound science to make improved risk assessment decisions. I ask all of the membership to join with me in this effort. If we do not rise to this challenge then we run very real risks, the risk of having the discipline of toxicology become marginalized and the risk of missing opportunities to use chemicals for the benefit of people.

I would like to close by restating an opinion presented in my first President's Message. We can strengthen SOT (and the discipline of toxicology) by placing an emphasis on four "BASIC THEMES" and, importantly, communicating these to our scientific colleagues in other disciplines and to the public. *First*, we need to better publicize the key concept in toxicology "it is the dose that makes the poison." *Second*, toxicology is a part of the solution. Toxicology has played a key role by defining the conditions of use under which we may employ chemicals for good causes. Yes, some mistakes have been made; yes, there are places where we should improve; and, importantly, yes, we are striving to improve. *Third*, exaggerated estimates of risk can be "toxic," e.g., these can foster the public's misunderstanding of science. *Fourth*, enhancing the scientific basis of risk assessment can provide a win-win situation. Enhancing the scientific basis of risk assessment can result in more sound decisions leading to both improved protection of human health and the environment, and a wiser utilization of our limited financial resources, i.e., a win-win situation.

Basic Themes

- The dose makes the poison.
- Toxicology is part of the solution.
- Exaggerated estimates of risk can be "toxic."
- Enhancing the scientific basis of risk assessment can provide a win-win situation.



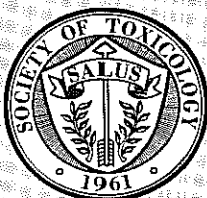
Jay I. Goodman, Ph.D.
1999-2000 President

Women in Toxicology

The SOT Council voted to form an Ad Hoc Working Group for Women in Toxicology (WIT) for a three-year period beginning July 1, 1999. At the end of this initial period, Council will evaluate the accomplishments and continuing needs of WIT and the Group may evolve into a standing group within SOT or may continue as an Ad Hoc Working Group. The following members have volunteered to be committee members of the Ad Hoc Working Group on WIT: **Gina Pastino (Chair), Linda Birbaum, Shannon Archibeque-Engle, Elise Jackson, Mary Haasch, Ruthann Rudel, Michelle Hooth, Annie Jarabek, and Eva Oberdorster.** Dave Eaton will serve as the SOT Council Liaison to the group. WIT is open to all SOT members.

Over the next year the WIT Group will further develop the mission and goals (see SOT *Communiqué*, Spring 1999). The group will also work on the agenda for the WIT 2000 meeting in Philadelphia.

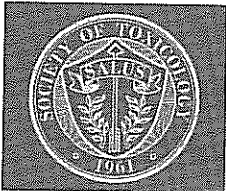
Continued to page 11



The *Society of Toxicology Communiqué* is published 5 times annually in Reston, Virginia, for members of the Society of Toxicology.

Editorial Office and Membership:
Society of Toxicology
1767 Business Ctr. Dr., Suite 302
Reston, VA 20190-5332
Phone: (703) 438-3115
Fax: (703) 438-3113
E-Mail: sothq@toxicology.org
Visit the SOT Home Page at <http://www.toxicology.org>

Newsletter Editor:
A. Jay Gandolfi, Ph.D.
Deadlines for Upcoming Issues:
August 3, 1999 (Fall Issue)
October 3, 1999 (Winter Issue)
December 3, 1999 (Special Issue)



Contemporary Concepts In Toxicology

In Vitro Human Tissue Models in Risk Assessment

September 20-21, 1999

**Turf Valley Resort and Conference Center
2700 Turf Valley Road
Ellicott City, MD 21042**

**Tel: (410) 465-1500
Fax: (410) 465-7365**

Human cell and tissue models are becoming important tools for regulatory decision making. This workshop will allow attendees to hear and interact with a core group of internationally recognized invited experts to consider the state-of-the-art science in the use of human cell and tissue models for the prediction of human metabolism, toxicity, and pharmacokinetic behavior. Consensus recommendations regarding the use of such models in regulatory decision making and risk assessment will be developed in discussion groups led by the invited experts. Recommendations developed at the workshop will be submitted to *Toxicological Sciences* for publication.

Harmonization of Cancer and Non-Cancer Risk Assessment

November 1-3, 1999

**Sheraton National Hotel
Columbia Pike & Washington Blvd.
Arlington, VA 22204**

**Tel: (703) 521-1900
Fax: (703) 521-2122**

This workshop will explore the most critical issues involved in developing a unified approach to risk assessment for all toxic endpoints. The workshop will be used to build consensus where it can be achieved and to identify the range of opinions for those areas where there is no consensus.

The following are key issues that will be discussed in separate breakout groups and examples of focus questions that will be discussed.

- Mode of action as the basis for harmonization
- Common levels of adverse effects for risk assessment
- Scaling and uncertainty factors

Interested scientists are welcome to attend all sessions and breakout groups of the workshop. Time will be made for comments and questions by the attendees.

Mechanisms of Nephrotoxicity and Nephrocarcinogenicity

April 15-18, 2000

**Harbor View Hotel
131 North Water St.
Edgartown, Martha's Vineyard, MA 02539**

**Tel: (508) 627-7000
Fax: (508) 627-7845**

This workshop will promote in-depth knowledge and discussion on the mechanisms of nephrotoxicity and nephrocarcinogenicity. Attendees will have the opportunity to hear and interact with a diverse group of internationally-recognized leaders in the fields of renal toxicity and carcinogenicity. Sessions include: renal xenobiotic biotransformation and transport, mechanisms of renal cell injury and cyto-protection, mechanisms of nephrocarcinogenicity and related pathologies, role of neutrophils and cytokines in renal injury and regeneration, and the glomerulus as a target of toxic injury and drug/chemical-induced renal failure. In addition, a keynote address, discussion groups and poster sessions will be held.

**For more information on
these workshops, contact:**

Tonia Masson
SOT Headquarters
Tel: (703) 438-3115
E-mail: tonia@toxicology.org

WORKSHOPS

39th Annual Meeting • Philadelphia, Pennsylvania

Tentative Program Overview

All scientific sessions and exhibitions will be held at the Pennsylvania Convention Center.
All specialty section functions, regional chapter meetings and ancillary events will be held at the Philadelphia Marriott.

25-Year Member Reception	Sunday, March 19	6:30 PM - 7:00 PM
Annual Business Meeting	Tuesday, March 21	4:30 PM - 6:00 PM
Award Presentations	Thursday, March 23	4:30 PM - 5:30 PM
Burroughs Wellcome Toxicology Scholar Award Lectures	Tuesday, March 21 Wednesday, March 22	8:00 AM - 8:30 AM 8:00 AM - 8:30 AM
Continuing Education Courses	Sunday, March 19	7:00 AM - 7:45 AM 8:15 AM - 12:00 PM 1:15 PM - 5:00 PM
Exhibit Hall Complimentary Coffee	Monday, March 20 Tuesday, March 21 Wednesday, March 22	9:30 AM - 10:30 AM 9:30 AM - 10:30 AM 9:30 AM - 10:30 AM
Exhibit Hall Hours	Monday, March 20 Tuesday, March 21 Wednesday, March 22	9:30 AM - 4:30 PM 9:30 AM - 4:30 PM 9:30 AM - 4:30 PM
Final Night Reception	Thursday, March 23	5:30 PM - 7:30 PM
Forum on Grantsmanship	Tuesday, March 21	1:30 PM - 4:30 PM
Graduate Student Luncheon	Tuesday, March 21	12:00 PM - 1:00 PM
Issues Session	Thursday, March 23	12:00 PM - 1:30 PM
Media Training Workshops for Toxicologists Media Training I: What To Do When the Media Calls Media Training II: On-Camera Training for Toxicologists	Saturday, March 18 Saturday, March 18 Sunday, March 19	3:00 PM - 4:00 PM 4:00 PM - 6:00 PM TBA
Medical Resource Council (MRC) Lecture	Monday, March 20	12:00 PM - 1:15 PM
<i>Paracelsus Goes to the Classroom</i> Teacher Workshop	Tuesday, March 21	8:00 AM - 5:00 PM
Placement Service Seminar	Monday, March 20	4:30 PM - 5:30 PM
Plenary Lecture	Monday, March 20	8:30 AM - 9:30 AM
Poster Sessions	Monday, March 20 Tuesday, March 21 Wednesday, March 22 Thursday, March 23	9:30 AM - 4:30 PM 9:30 AM - 4:30 PM 9:30 AM - 4:30 PM 8:30 AM - 4:30 PM
Regional Chapter Meetings	Monday, March 20 Tuesday, March 21 Wednesday, March 22	7:00 PM - 8:00 PM 7:00 PM - 8:00 PM 7:00 PM - 8:00 PM
Registration Desk	Saturday, March 18 Sunday, March 19 Monday, March 20 Tuesday, March 21 Wednesday, March 22 Thursday, March 23	4:00 PM - 7:00 PM 7:00 AM - 5:00 PM 7:00 AM - 5:00 PM 8:00 AM - 4:00 PM 8:00 AM - 4:00 PM 8:00 AM - 12:00 PM
SOT/EUROTOX Debate	Tuesday, March 21	12:00 PM - 1:15 PM
Specialty Section Meetings/Receptions	Monday, March 20 Tuesday, March 21 Wednesday, March 22	6:15 PM - 7:15 PM 6:15 PM - 7:15 PM 6:15 PM - 7:15 PM
Student/Post-Doctoral Fellow Reception	Sunday, March 19	7:00 PM - 9:00 PM
Symposia, Workshops, Roundtables, Innovations in Applied Toxicology Session, Innovations in Toxicological Science Session, Platform Sessions, Poster Discussions, Poster Sessions	Monday, March 20 Tuesday, March 21 Wednesday, March 22 Thursday, March 23	9:30 AM - 4:30 PM 8:30 AM - 4:30 PM 8:30 AM - 4:30 PM 8:30 AM - 4:15 PM
Undergraduate Educational Program for Visiting Students	Sunday, March 19	9:00 AM - 5:00 PM
Welcoming Reception	Sunday, March 19	5:00 PM - 6:30 PM

SOT Council Prepares an Evaluation of Consumers Union's Toxicity Index

Submitted by Jay I. Goodman

On March 8, 1999, SOT Council drafted a letter expressing its concern over the Consumers Union's (CU) report entitled "Do you know what you are eating? An analysis of U.S. Government data on pesticide residues in foods." (Consumers Union, February 1999, http://www.consunion.org/pdf/Do_You_Know.pdf). This was sent to a number of organizations (e.g., CU, the Administrator of the EPA and the Commissioner of the FDA) and to individuals (e.g., SOT membership and selected members of Congress), and it was placed on our web site. The letter was sent to EPA and FDA because CU sent these agencies a copy of their report. The report is based upon CU's term the "toxicity index (TI)," which was calculated for individual fruits and vegetables. While CU notes that their analysis is not a true risk assessment, CU implies great risk based upon their TI's. The letter from Council stated that the CU report's conclusions concerning the dangers of pesticides in food are not credible because the methodology used to determine the TI is scientifically invalid.

Council has now prepared an evaluation (entitled "Council of the Society of Toxicology's Evaluation of the Methodology Used by Consumers Union to Calculate an Index to Assess the Relative Risks of Exposure to Pesticides") of the methodology CU used to calculate their TI in order to expand upon our statement. This has been sent to those who received our March 8th letter. This evaluation is consistent with our Society's belief that sound science should be an integral part of risk assessments and the regulatory actions based upon them. Additionally, the cover letter accompanying the evaluation urged the regulatory agencies to continue their efforts that keep our food supply safe and abundant, and reiterated SOT's willingness to serve as a resource to them on risk assessment-related matters. Both the cover letter and the evaluation are posted on our web site. (See "Table of Contents" and then "President's Section.")

Call for Abstracts

Continued from page 1

The 2000 scientific session topics include:

Symposia

- Advances in the Use of Mechanism-Based Biomarkers in Risk Assessment
- Application of Clonal Growth Models to Cancer Dose-Response
- Assessing the Safety of Gene Therapy
- Dendritic Cells: Targets for and Mediators of Immunotoxicity and Allergy
- From Epidemiology to the Gene: Mechanisms by Which Particulate Matter Induces Adverse Effects
- Human-Health and Ecological Impact of Harmful Algal Blooms
- Immunotoxicity of Ethanol: Lessons from a Structurally Simple, but Functionally Complex Immunotoxicant
- Interaction with Ionotropic Neurotransmitter Receptors by Environmental Toxicants: Consequences for Neuronal Function
- Metallothionein Subcellular Localization and Regulation of Cell Cycle and Apoptosis
- Molecular Approaches to Studies of Glutathione Metabolism and Function
- Molecular Mechanisms of Chemical Teratogenesis
- Mycotoxins: Recent Advances and Their Relevance to Carcinogenesis and Toxicology
- The Role of Endotoxin in Occupational and Environmental Lung Disease: Exposure-Response Relationships, and Susceptibility Factors
- Toxicological Database Mining in the 21st Century

- Values and Limitations of Transgenic Animals in Immunotoxicology

Workshops

- Arsenic: Carcinogenic Mechanisms, Risk Assessment and the MCL
- Current Status of Model Development for Photobiology Risk Assessment with Relevance to Humans
- Fritz Haber and His Impact on Toxicology
- Harmonization of Cancer and Non-Cancer Risk Assessment: Moving Beyond the NRC Redbook
- Human Immunotoxicity: Examples and Strategies for Determining Risk
- The Influence of Co-Pollutants of the Toxicity of Airborne Particulate Matter
- Integration of Mechanistic, Toxicological and Epidemiological Data into the EPA's Trichloroethylene Cancer Assessment
- Latex Allergy in the Workplace
- Toxicological Considerations of Pharmaceuticals for Pediatric Patients
- Toxicology for Kids, Part II: The Classroom Experience
- What You've Always Wanted to Know About Airborne Particulate Matter, But Were Afraid to Ask

Roundtables

- Are Dietary Supplements Safe?
- Autoimmune Consequences of Toxicant Exposure in Human Populations: Fact or Fiction?

Continued to page 8

AWARDS

SOT Student Awards

Information and applications for these Student Awards are available at the SOT Web site (<http://www.toxicology.org/spon.html>).

Colgate-Palmolive Post-Doctoral Fellowship Award in *In Vitro* Toxicology

The Colgate-Palmolive Company sponsors this Post-Doctoral Fellowship Award through the Society of Toxicology, directed specifically toward the development of innovations in the use of alternatives to whole animal testing in toxicology. Post-doctoral trainees in their first year of study beyond the Ph.D., M.D., or D.V.M. degree who are employed by academic institutes worldwide may apply. This fellowship is awarded in alternate years and the next application deadline is **October 1, 1999**. Finalists will be invited to attend the SOT 2000 Annual Meeting for an interview.

Graduate Student Fellowship Awards

The Education Committee of the Society of Toxicology announces the availability of Graduate Student Fellowship Awards in Toxicology. The 2000 Awards are sponsored by Novartis Corporation, Covance and The Procter & Gamble Company. Fellowship Awards are for one year and are administered by the awardee's academic department.

Any graduate student with at least two years of graduate study toward a Ph.D. degree in any area of toxicology, and whose major professor is a member of the Society of Toxicology, may apply.

Evaluation by the Education Committee is based primarily on:

- Originality of the dissertation research
- Research productivity
- Relevance to toxicology
- Scholastic achievement
- Letters of Recommendation

Applications are due by **October 1, 1999**. Finalists will be invited to attend the SOT 2000 Annual Meeting for an interview. The winners of these awards will be announced at the Annual Meeting. These are prestigious awards of \$16,000 each. Applications are available on the SOT Web site or from the SOT Headquarters office.

Graduate Student Travel Grants

The Society of Toxicology's Student Travel Grants, administered by the Education Committee, help defray travel expenses for students attending the 2000 SOT Annual Meeting. To be eligible for funding, students must be an SOT student member (or have applied for student membership by October 1); must be presenting an abstract at the SOT Annual Meeting; and must not have been previously selected for this award.

A completed application, along with a copy of the SOT abstract being presented at the Annual Meeting, must be submitted to SOT Headquarters by **October 1, 1999**.

Applications for Graduate Student Travel Grants will be mailed to all SOT student members in August. The application can also be printed from the Web site.

Specialty Section Student Awards

Most SOT Specialty Sections offer awards to graduate students who present research papers at the SOT Annual Meeting. Although requirements vary among the Specialty Sections, an abstract of research to be presented at the Annual Meeting is required by all. A list of the Student Specialty Section Awards and application requirements is located on page 28 of the Annual Meeting Preliminary Information Packet, which was mailed to members in July.

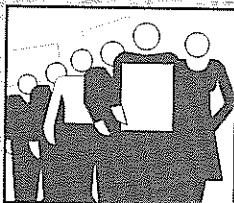
4th Edition *Resource Guide to Careers in Toxicology* Available Summer 1999

Thanks to the efforts of the Education Committee and editor **James Klaunig**, the newly revised *Resource Guide to Careers in Toxicology* will be released this summer. Over 50 institutions have chosen to participate in the volume, which is widely requested by students and career centers, and is mailed by SOT to college and university advisors. Purposely thinner than past editions, the *Resource Guide* features the web addresses of the listed programs so that up-to-date contact, faculty, and curriculum information will be readily available directly from the program web site. Hot links to these program sites will appear in the SOT Internet version, which will be a posting of the entire *Guide*. The introductory section contains current information about opportunities and salaries for toxicologists.

Toxicology is a career of increasing prominence. For example, it was recently featured in *The Cool Careers for Dummies Guide*. The new *Resource Guide* will be an important source of information for students seeking to learn more about toxicology. In addition, the booklet contents will be a chapter in the Academic Press publication, *Information Resources in Toxicology, 3rd Edition*, due out later this year.

Requests for printed copies should be directed to SOT Headquarters.

Poster Discussion Solicitation



The primary objective of the Poster Discussion format is to foster and encourage public discussion and debate of important scientific issues relevant to the major themes in the poster sessions. A secondary objective is to provide specific feedback to the authors concerning their data and its interpretations.

To help meet these objectives, the Program Committee revised the guidelines and format for Poster Discussion sessions. The session chairpersons are now asked to group abstracts according to 2-3 selected topic areas and identify key issues to be addressed during the discussion segment of the session. The poster presenters will be asked to be prepared to address these during the session rather than summarize the key findings for their posters. Chairpersons will act to promote and facilitate discussion of the key issues identified for each topic area. The Program Committee believes that the opportunity for an exchange of ideas will be enhanced if the presenters and the audience can discuss one topic at a time.

Therefore, in a continuing effort to strengthen the Annual Meeting Scientific program, the Program Committee is encouraging interested parties to submit pre-solicited groupings of meeting abstracts which would constitute viable Poster Discussion sessions. Each session should contain approximately 8-12 posters and consist of one hour of poster viewing time followed by two hours of author/panel/audience discussion. A Poster Discussion Proposal Form is included in this newsletter. This form must accompany the cluster of original abstract submissions and should be submitted by **October 1, 1999**, the Annual Meeting general abstract deadline.

Although we hope to schedule each proposed poster discussion session, due to the potential numbers and facility limitations, it is possible that not all requests will be honored. However, submitted abstracts in clusters not accepted for Poster Discussions will be considered independently by the Program Committee during the normal abstract review.

Awards Deadline

Nominations must be received by
October 1, 1999.

Check the SOT Web site for award descriptions
(www.toxicology.org).

Call for Abstracts

Continued from page 6

Innovations in Applied Toxicology

- Toxicology in the Next Millennium: Toxicogenomics and Proteomics

Innovations in Toxicological Sciences

- Role of Co-Repressors and Co-Activators in Regulation of Soluble Receptor Mediated Transcription

The 2000 Continuing Education topics include:

The meeting will offer continuing education courses on Sunday, March 19, 2000. Both basic and advanced courses will be offered and include:

- Advanced Neurotoxicology: Biomarkers and Mechanisms of Oxidative Stress Induced Neurotoxicity
- Advances in Non-Invasive Micrometer and Nanometer Scale Cellular/Tissue Vital Imaging
- The Application of Philosophy to Risk Assessment, Management, and Communication
- Environmental Epidemiology and Toxicology: The Interface and the Interactions
- Introduction to Proteomics
- Metabonomics – A New Approach to Drug Toxicity Screening using NMR Spectroscopy, Pattern Recognition, and Expert Systems
- Metal Exposure and Toxicity of the Respiratory Tract
- Molecular Approaches to a Comprehensive Understanding of Cardiotoxicity
- Molecular Genetics, Metabolism, and Cell Signaling in Renal Carcinogenesis: A Lesson in Synergistic Toxicology
- Phototoxicology: Basic Principles of Light, Photobiology, and Regulatory Issues
- Pulmonary Immunotoxicology
- Rodent Toxicity and Nongenotoxic Carcinogenesis: Knowledge-Based Human Risk Assessment from Molecular Mechanisms
- Safety Pharmacology and Risk Assessment
- Tips for Effective Risk Communication
- Toxicogenomics in the Trenches
- Toxicokinetics and Physiologically Based Toxicokinetics in Toxicology and Risk Assessment
- Use of Antibody Reagents to Evaluate Toxicant-Mediated Signal Transduction Pathways

Abstract presentations remain the cornerstone of the SOT Annual Meeting. Abstract submissions are due **October 1, 1999**. Abstracts of the SOT Annual Meeting are published as a special edition of *Toxicological Sciences* and are cited in on-line database services.

Attendees will want to make plans to stay for the Award Presentations and Final Night Reception—two popular events which are scheduled for Thursday night.

Gillette Contribution Kicks Off TEF Corporate Campaign

The Gillette Company has generously contributed \$25,000 to jump-start the corporate fund-raising portion of the campaign by the Toxicology Education Foundation (TEF) to put quality toxicology-related curriculum into classrooms across the United States. With SOT's pledge to match contributions since November 1998 (up to a total of \$100,000), the impact of this large gift is doubled. These funds will be put to use immediately in TEF's "Toxicology in the Classroom" Project.

The TEF has entered into an agreement with the Environmental and Occupational Health Sciences Institute (EOHSI) of Robert Wood Johnson Medical School and Rutgers to provide teacher training and dissemination of the EOHSI school curriculum unit "What is Wrong with the Johnson Family?" This module for grades 3-6 is part of the ToxRAP (Toxicology, Risk Assessment, and Pollution) curriculum series and was chosen after careful review by a task force from the TEF and the Education Subcommittee for K-12 Education. Teams from NIEHS centers and other regional education groups will be trained at Rutgers and then conduct teacher workshops in their regions. Each team will include a SOT regional chapter representative.

The TEF leadership for 1999-2000 includes A. Wallace Hayes, president, Marion F. Ehrich, vice-president, and Harihara Mehendale, secretary-treasurer. Other trustees include Steven D. Cohen, John Doull, William O. Berndt, R. Michael McClain, and Mary Jo Vodcnik. Rick Schnellmann and John Thomas serve as liaisons with the Education Committee and K-12 Subcommittee, respectively.

Member and corporate contributions for the campaign may be sent to the TEF, 1767 Business Center Drive, Suite 302, Reston, VA 20190.

What is Available to Regional Chapters from SOT?

The Regional Chapters are flourishing and are a critical component to the growth and success of the SOT and the discipline of toxicology. One of the daunting tasks for the new officers of Regional Chapters is to put together the scientific program for the Regional Chapter's annual meeting. With this in mind, it is important that the Regional Chapter members are aware of the support that SOT provides for the Regional Chapters.

1. Speakers:

a. Continuing Education Speakers Bureau

There is a list of the CE Speakers who have agreed to do a presentation on the topic they presented at the annual meeting. *SOT will cover the travel costs for a limited number of these speakers.*

b. SOT Council

The members of the SOT Council are available to present SOT topics (e.g., long-range plans) at the Regional Chapter meetings. In addition, the Council members are recognized experts and are also available to do a presentation on their area of research. *Cost for Council travel will also be covered by SOT.*

2. Financial Support:

The SOT Council recently approved \$2,000 funding to support a Regional Chapter's effort to produce a program that supports SOT's Long-Range Plan. *This funding is available to each Regional Chapter and is available on an annual basis.* For details please check with SOT Headquarters and the Council Liaison.

Continued to page 16

SOT Member, Dr. James Bus, was the 1999 recipient of the Seventh Annual Robert A. Scala Award. This award, presented annually by the Environmental and Occupational Health Sciences Institute, is named for Dr. Robert A. Scala, who was a former SOT president and former director of the Research and Environmental Health Division at Exxon Corp. The Robert A. Scala Award honors the work of outstanding toxicologists in industry and promotes continued outstanding scientific contributions by industrial organizations.

Dr. Bus was chosen to receive this award because of his involvement in toxicological, scientific activities that show promise of making significant, original contributions to the field. Dr. Bus is a past president of SOT and is a current member of both the U.S. Environmental Protection Agency and the National Toxicology Program Boards of Scientific Counselors and serves as a Director of the International Union of Toxicology. He received his Ph.D. in Pharmacology from Michigan State University in 1975 and a B.S. in Medicinal Chemistry from the University of Michigan in 1971. Dr. Bus is employed by Dow Chemical and is currently an Adjunct Professor of Pharmacology and Toxicology at Michigan State University.

Change of Address

Effective August 16, 1999,

Dr. William H. Benson can be reached at:

U.S. EPA

Gulf Ecology Division

1 Sabine Island Drive

Gulf Breeze, FL 32561-5299

Telephone: (850) 934-9208

E-mail: wbenson@epa.gov

How to Construct a Winning Abstract

It is never too early to begin thinking about your abstract for our 2000 Annual Meeting. By following these guidelines, developed by the Society's Program Committee, you will greatly enhance your abstract:

Abstracts describing the results of experimental studies must contain the following:

- A statement of rationale and scope of the study presented;
- A brief description of the experimental procedures;
- The data that resulted from the study; and
- Principle conclusion(s) based on interpretation of the results.

Phrases such as "results/data will be discussed" convey no information as to the outcome of the studies and are unacceptable.

For case studies that do not describe laboratory or field experiments, the following modifications are allowed:

- Instead of experimental procedures, the research or assessment approach should be briefly described.
- Instead of resultant data, the study's results or findings should be explicitly summarized.

Abstracts describing new initiatives or science policy in the regulatory community must clearly describe the impact on practice of toxicology and/or risk assessment. Abstracts must not contain tables, figures, or chemical structures.

As always, please take care to read all abstract submission guidelines and instructions listed in the SOT Preliminary Information Packet (now available through SOT Headquarters). In addition, make sure to prepare your abstract title using the instructions and samples provided. The Program Committee looks forward to receiving your submission.

ANIMALS IN RESEARCH

Members Called to Support Animal Research Efforts

SOT members can support animal research efforts by bringing recognition to deserving colleagues who have improved the climate for quality science and strengthened toxicological research. The Animals in Research Committee asks you to help ensure that the many excellent potential candidates for the **two new SOT awards** are nominated. Over the past three decades, the Society has expanded into a diverse organization that draws from many talents and many fields. Our research has both improved upon the use of whole animal systems as well as demonstrated the necessity for the use of animals to advance basic and applied research in toxicology. Such advances will be spotlighted by the new awards.

The **Contribution to Public Awareness of the Importance of Animals in Toxicology Research Award** is not limited to Society members and may recognize an organization or individual whose efforts have produced a better understanding by the public about the critical role of animals in toxicological research, and how that research leads to enhanced protection of human health and the environment. Too often, public discussion of the use of animals in research has been negative, and leads to public outcry and proposed legislation that may impede the research of responsible scientists. Research interference can happen in two ways: by restricting the

type of experiments that are "acceptable" and by diminishing limited research resources due to regulations that are of little or no benefit to animal welfare. The Society wishes to recognize and reward those who effectively present to the public the positive benefits of research using whole animal systems, and whose activities protect the scientist from unnecessary regulatory burden. Guidelines for the nominations are abstracted below.

The award will be made to an individual (or organization) who has promoted an understanding among the public of toxicological science and the needs for, and benefits of, animal experimentation.

An individual may qualify for this award based on a single seminal piece of work that has achieved an improved public understanding of toxicological science and the associated requirement for animal experimentation. Alternatively, the award may be made in recognition of a long-standing and productive commitment to the improved public understanding of toxicology, emphasizing the importance of the use of animals in research. Nominations that reflect achievements in promoting among school children and young people an appreciation of toxicological science and an understanding of the need for animal experimentation will be particularly welcomed.

Continued to page 14

CE Speakers Available to Regional Chapters

The Continuing Education courses provided excellent lectures to participants at the 1999 Annual Meeting. Now SOT will make some of the course presentations available to a wider audience. Outstanding speakers who are SOT members have been identified based upon course evaluations, and these selected speakers have agreed to participate in the SOT CE Speakers Bureau. Any Regional Chapter may request a presenter from the list below for chapter meetings, and SOT will provide funding to cover the speaker's costs. The first step is to contact Ann Kerstetter (annk@toxicology.org) at SOT Headquarters and put in your request. From there, the CE Committee will evaluate the request and make the final decision. Limited funds are available and these will be allocated as requests are received, so it is important to put your request in early!

1999 Continuing Education Speakers Bureau

NAME	AFFILIATION	TITLE	AREAS OF INTEREST
John Frazier, Ph.D., S.T.	AFRL/HEST Wright-Patterson Air Force Base, OH	Target Organ Dosimetry: An Exercise in Modeling Complex Biological Systems	<i>In Vitro</i> Toxicology, Mathematical Modeling and Quantitative Structure Activity Relationships
Meryl Karol, Ph.D.	University of Pittsburgh, Pittsburgh, PA	Models of Contact and Respiratory Sensitivity and Structure-Activity Relationships	Immunology of Lung and Skin Diseases, Structure-Activity Relationships of Hypersensitivity Reactions and of Skin and Lung Irritation
William B. Mattes, Ph.D.	Pharmacia & Upjohn, Kalamazoo, MI	Basic Bioinformatics: From Sequence Analysis to Genome Analysis	Molecular Toxicology and Bioinformatics
Kent Pinkerton, Ph.D.	University of California- Davis, Davis, CA	Respiratory Tract Anatomy and Toxic Insult	Ozone, Inhaled Particulates, Air Pollution Insult
Rochelle W. Tyl, Ph.D., DABT	Center for Life Sciences and Toxicology, Research Triangle Park, NC	Overview of the EDSTAC Process and Background of the Endocrine Screening and Testing Batteries	Reproductive Toxicology and Endocrine Disruption
Kendall B. Wallace, Ph.D., DABT	University of Minnesota School of Medicine, Duluth, MN	Mitochondrial Targets of Chemical Toxicity	Mechanisms



In the Spring *Communiqué* article "K-12 Outreach Important Part of the 1999 Annual Meeting," the incorrect Regional Chapter affiliation was provided for the local members assisting with the Paracelsus teacher workshop. Benny Blaylock, workshop organizer, as well as the mentors who assisted with the activity, are from the South Central regional chapter. SOT recognizes and appreciates the good work of these South Central chapter members.

Women in Toxicology

Continued from page 3

SOT Headquarters will develop a WIT e-mail distribution list. Updates will be provided regularly through the e-mail list as well as via the *Communiqué*. For those of you who signed up at the meeting in New Orleans, your name will automatically be added to the distribution list. If you would like to be added to the list or have any questions regarding the WIT Group, please contact Gina Pastino at (908) 647-8111 or E-mail: gina_pastino@mclaren-hart.com. Your ideas or suggestions are welcome!

Use Fax-On-Demand to retrieve Annual Meeting Information and Membership Application Packets:

1-800-529-8635

PLACEMENT SERVICES

Head of Toxicology

We are seeking an individual to manage and to direct preclinical development and safety assessment of new chemical entities across a broad range of therapeutic areas. This position will be responsible for the nonclinical safety assessment strategies for drug development, and the management of toxicology studies of drugs in a wide range of therapeutic areas in preclinical, phase I-III and post-marketing/phase IV stages. This position will also be responsible for writing, reviewing and approving preclinical toxicology sections of regulatory documents such as regulatory responses, IND/CTX/MAA/Expert Reports and NDAs.

Responsible for interacting across disciplines as an integral part of development teams which include Planning, Regulatory Affairs, Clinical Research, Clinical Pharmacology, Technical Development and Marketing. The person will represent Vertex for presentations and discussions of nonclinical issues at various regulatory meetings (internal and external) and provide general expertise in various aspects of nonclinical drug development and safety/risk assessment for novel drug candidates. This position will also be responsible for interacting with corporate partners and make presentations to existing and potential corporate partners on safety and risk assessment strategies; and will also be responsible for establishing and managing a toxicology department internally.

The successful candidate will have 7-10 years of experience in the pharmaceutical industry or in contract toxicology research organizations, with an established track record of developing and managing preclinical safety and risk assessment programs, and a D.V.M. and/or a Ph.D. in Toxicology, Pathology or Pharmacology. Candidates must have excellent written and oral communications, and be able to communicate strategies, tactics and issues to multidisciplinary teams internally and externally, in both oral and written forms. Experience in management of contract research organizations and/or an internal group of multidisciplinary toxicology individuals is necessary. Broad drug development experience and understanding of toxicological, toxicokinetic and drug metabolism principles is required.

Please submit cover letter and resume on-line (preferred method), to: www.vpharm.com/jobs or to Human Resources, Vertex Pharmaceuticals, Job Code: SOT 300-36, 130 Waverly Street, Cambridge, MA 02139; Fax: (617) 577-6645.

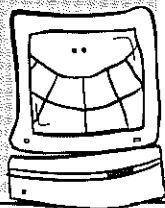
Director

Michigan State University (MSU) invites nominations and applications for the position of Director of the National Food Safety and Toxicology Center (NFSTC). The NFSTC is a multidisciplinary unit that draws its faculty from six colleges and is headquartered in a new, centrally located facility. In addition to existing faculty appointments, MSU has committed eight new faculty positions to be appointed with NFSTC. The successful candidate will have a distinguished research record in the Food Safety area with demonstrated leadership and administrative experience. Candidates should have a Ph.D. degree or equivalent and experience in an appropriate disciplinary area associated with Food Safety. Interested applicants should submit a *curriculum vitae*, a cover letter describing the candidate's research, academic and administrative experience, and the names and addresses of three references. Review of candidates will begin on September 15, 1999, and will continue until the position is filled. For further information contact <http://foodsafety.msu.edu>. Applications, inquiries and nominations should be directed to **Dr. James J. Pestka**, Chair, Director Search Committee, National Food Safety and Toxicology Center, Michigan State University, 191 Food Safety and Toxicology, East Lansing, MI 48824-1302. E-mail: pestka@pilot.msu.edu. Telephone: 517-353-1709/Fax: 517-432-2310. MSU is an Affirmative Action/Equal Opportunity Institution.

Using the SOT On-Line Placement Service Yet?

Access to the Placement Service site can be achieved through the SOT Web site at www.toxicology.org.

Simply go to the Home page and locate the Placement Service description. Select the link and you will be directed to our on-line job bank.



Toxicology and Pathology Positions

We are MERIAL, the world's leading Animal Health company. Dedicated to the discovery, development, manufacture and delivery of innovative pharmaceuticals and vaccines, MERIAL's products are designed to enhance the health, well-being and performance of all animal species.

A research-driven company, MERIAL relies on outstanding people and highly focused R&D to both anticipate and respond to the needs of a rapidly changing Animal Health industry.

Toxicologist

Based at MERIAL's worldwide Pharmaceutical R&D headquarters in Iselin, New Jersey, MERIAL has an opportunity for a Toxicologist to join the Development Projects group. Working in a team environment, the Toxicologist will be responsible for supporting the Director of Drug Safety in the design, conduct, interpretation and reporting of safety studies for in-line products and product candidates. This individual will contract, monitor and report safety studies; develop and maintain the Group's database; conduct and summarize literature searches; and provide technical support for ADI, MRL and risk assessment determinations.

PLACEMENT SERVICES

We are seeking an individual with a recognized degree (Ph.D. or M.S.) in Toxicology or a related science/equivalent, 3-7 years of industrial or contract toxicology experience, good computer skills (i.e., spreadsheet and database management) and excellent interpersonal skills. Knowledge of regulatory requirements relative to safety and toxicity testing is required. Good written and verbal communication skills are a must. Specialty training or experience in occupational or environmental toxicology is a definite plus.

Veterinary Pathologist

Based at MERIAL's worldwide Pharmaceutical R&D headquarters in Iselin, New Jersey, MERIAL has an opportunity for a Veterinary Pathologist to join the Development Projects group. The Veterinary Pathologist will be responsible for supporting the Director of Safety Assessment in the design, conduct, interpretation and reporting of target species and human food safety studies for in-line products and product candidates. This individual will conduct gross and pathologic evaluation of animals; manage the pathology archives; provide expert

opinion for ADI, MRL and risk assessment determination; monitor and report the clinical aspects of pharmacovigilance; and represent the company in presentations to the Regulatory Authorities.

We are seeking an individual with a recognized degree in Veterinary Medicine, specialty training in pathology/toxicology, 5-plus years of experience in research or industrial veterinary medicine, and excellent interpersonal skills. Knowledge of regulatory requirements relative to safety and toxicity testing is necessary. Good written and verbal skills are a must. Advanced training or a degree in toxicology is a plus.

As the industry leader, MERIAL offers a stimulating work environment, competitive salary and benefits, as well as an attractive relocation program. If you are interested in joining a growth-oriented global leader, submit your resume and salary requirements to: Human Resources Department; MERIAL, 2100 Ronson Rd., Iselin, New Jersey, 08830 USA, or E-mail HRSU@merial.com. MERIAL is an equal opportunity employer.

The Continuing Education Committee thanks all of the graduate students whose efforts helped to make the 1999 CE courses such a success!

<i>Sanmi Areola</i>	<i>Texas Southern University, Houston, TX</i>
<i>Mark Felden</i>	<i>Michigan State University, Lansing, MI</i>
<i>Kirsten Fertuck</i>	<i>Michigan State University, Lansing, MI</i>
<i>Lisa Hudson</i>	<i>Virginia Tech, Blacksburg, VA</i>
<i>Anna Keck</i>	<i>University of Illinois at Urbana-Champaign, IL</i>
<i>Marquea King</i>	<i>Virginia Tech, Blacksburg, VA</i>
<i>Rebecca Marcus</i>	<i>Michigan State University, Lansing, MI</i>
<i>Jason Matthews</i>	<i>Michigan State University, Lansing, MI</i>
<i>Susan McKarns</i>	<i>Michigan State University, Lansing, MI</i>
<i>Andrew McDougal</i>	<i>Texas A&M-University, College Station, TX</i>
<i>Jesus Olivero</i>	<i>Michigan State University, Lansing, MI</i>
<i>Shashi Ramaiah</i>	<i>Northeast Louisiana University, Monroe, LA</i>
<i>Deepi Bandi Rao</i>	<i>University of Oklahoma, Oklahoma City, OK</i>
<i>Vincente Santa Cruz</i>	<i>University of Texas Medical Branch, Galveston, TX</i>
<i>Pramila Singh</i>	<i>Northeast Louisiana University, Monroe, LA</i>
<i>Tao Wang</i>	<i>Northeast Louisiana University, Monroe, LA</i>
<i>Michael Woolheiser</i>	<i>HELD/NIOSH, Morgantown, WV</i>

Try SOT's Electronic Abstract Submission System

Escape the hassles of mailing your abstract submission! The majority of last year's abstracts were submitted via the Internet. SOT members and non-members are again invited to submit an abstract for presentation at the 2000 SOT Annual Meeting using SOT's electronic abstract submission system. The system is designed for those individuals who will be paying their abstract fees by credit card and who have access to the Internet. Changes have been made to make submitting an abstract even more user friendly. Submissions can be entered until **Midnight (Eastern time) on October 1, 1999**, giving you additional time to complete your abstract.

Access to the Abstract site can be achieved through the SOT Home page at (www.toxicology.org). Simply go to the Home page and select the Abstract Submission menu option. Click on the available link, and you will be directed to the on-line system. Just follow the screen prompts and in minutes, your submission will be complete. You no longer need to leave the comfort of your home or office.

For those individuals who still wish to submit their abstract via mail, please complete the Abstract Form in the SOT Preliminary Information Packet (currently available). This form should be mailed to the SOT address listed along with a diskette, containing the abstract text, and your abstract submission fee. All mailed submissions must be received by **5:00 p.m. (Eastern time) on October 1, 1999**.

The Burroughs Wellcome Fund—Nominations Needed

The 2000 Career Awards in Biomedical Sciences

The 2000 Career Awards in Biomedical Sciences are intended to foster the development of biomedical researchers who are early in their careers and to help them make the critical transition to becoming independent investigators. Awards provide support ranging from \$445,000 for four years to \$574,000 for six years to bridge advanced post-doctoral training and the first three years of faculty service. Recipients may spend part of the award period at institutions in the United Kingdom or the Republic of Ireland. **The application deadline for these awards is October 1, 1999.**

It is anticipated that at least 21 awards will be made. Approximately half of the awards will go to researchers with a Ph.D. degree in one of the biomedical sciences, and half will go to researchers with a M.D. or M.D.-Ph.D. degree. Candidates must be citizens or permanent residents of the United States or Canada at the time of application.

For more information contact **Rolly Simpson**, program associate, at (919) 991-5110 or send an E-mail message to mailback@bwfund.org (type the word "menu" on the subject line for a list of programs) or visit BWF's Web site at <http://www.bwfund.org>.

Animals in Research

Continued from page 10

The **Enhancement of Animal Welfare Award** is designed for a Society member who has made a contribution to science through the development and application of methods that replace, refine, or reduce the need for experimental animals without compromising experimental quality while advancing knowledge in the science of toxicology. The guidelines for the recipient are abstracted below:

This award is designed to promote the scientifically justifiable reduction, refinement, and/or replacement of animals in toxicological science. This could occur by the development of scientifically justifiable techniques to obtain the same quality of information using fewer experimental animals, an alteration in procedure that leads to a decrease in the incidence and/or severity of stress and discomfort to experimental animals or the introduction of new methods that do not require the direct use of animals in experimentation.

Some examples include the following:

- Development and promotion of less invasive or less stressful veterinary either through refinement of a surgical process or development of a noninvasive monitoring method.
- Development and promotion of methods to maximize the amount of information obtained from animal experimentation and/or minimize the number of animals required to obtain scientifically valid data.
- Development and promotion of experimental designs and statistical methods that maximize data collection, and/or decrease the number of animals required to evaluate a toxicological endpoint.
- Development and promotion of methods designed to replace the use of vertebrate species such as methods developed using invertebrates (e.g. insects), or bacteria to replace traditional methods using vertebrates.
- Development and validation of an alternative method (e.g., using tissue culture or computer simulations) to replace a traditional (established) method using vertebrates.

Complete application information is available on the SOT Web site. Additional questions and award nominations should be submitted to the Awards Committee, c/o the Society of Toxicology, 1767 Business Center Drive, Suite 302, Reston, VA 20190-5332. Nominations are due October 1, 1999.

UPCOMING CONFERENCES

- **ACGIH Conference, "Hazard Control Technologies in Healthcare: Collaborative Strategies for the Next Millennium,"** August 2-4, 1999, Doubletree World Arena, Colorado Springs, CO. Contact: ACGIH, 1330 Kemper Meadow Drive, Cincinnati, OH 45240; Tel: (513) 742-2020; Fax: (513) 742-3355; E-mail: healthcare@acgih.org; Web site: <http://www.acgih.org/events/hlthcare.htm>.
- **Workshop on Physiologically-Based Pharmacokinetic/ Pharmacodynamic Modeling and Risk Assessment,** August 2-13, 1999, University Park Holiday Inn, Fort Collins, CO. Contact: Tel: (970) 491-7501; Fax: (970) 491-3568.
- **8th Annual 1999 Midwest Cytochromes P450 Symposium,** September 10, 1999, Purdue University, West Lafayette, IN. All meeting information and registration forms are available at: www.btny.purdue.edu/p450.
- **British Toxicology Society Autumn Meeting,** September 12-14, 1999, Keeble College, Oxford, UK. Contact: Dr. TJB Gray, Meetings Secretary, Sanofi Research, Willowburn Avenue, Alnwick, Northumberland NE66 2JH, England; Tel: +44(0)1665 607370; Fax: +44 (0)1665 607510.
- **Mountain West SOT Regional Chapter Meeting,** September 16-17, 1999, Breckenridge, CO. Contact: Dennis Petersen, University of Colorado; Tel: (303) 315-6159; Fax: (303) 315-6281; E-mail: petersed@java.uchsc.edu.
- **Toxicology for the Next Millennium,** September 20-23, 1999, Airlie Conference Center, Warrenton, VA. Seeking abstracts. Contact: New York Academy of Sciences, Tel: (212) 838-0230; Fax: (212) 838-5640; E-mail: conference@nyas.org; Web site: www.nyas.org/nyasconf.htm.
- **The Use of Human Tissue Models in Risk Assessment, An SOT Contemporary Concepts Consensus-Building Workshop,** September 20-22, 1999, Turf Valley Resort and Conference Center, Ellicott City, MD. Contact: Tonia Masson at SOT Headquarters, 1767 Business Center Drive, Suite 302, Reston, VA 20190-5332; Tel: (703) 438-3115; Fax: (703) 438-3113; E-mail: tonia@toxicology.org; Web site: <http://www.toxicology.org>.
- **Industrial Toxicology and Pathology,** September 27-29, 1999, Ramada Inn, Bethesda, MD. Contact: Ruth Murphy, Department of Medical Education, Armed Forces Institute of Pathology, Washington, D.C. 20306-6000; Web site: <http://www.afip.org>.
- **1999 North American Congress of Clinical Toxicology,** September 29-October 4, 1999, Hyatt Regency, La Jolla, CA. Contact: Contemporary Forums Conference Management, 11900 Silvergate Drive, Dublin, CA 94568; Tel: (925) 828-7100, ext. 0; Fax: (800) 329-9923; E-mail: nacct@cfforums.com; Web site: www.clintox.org.
- **Preclinical Methods for Detecting the Potential Hypersensitivity of Pharmaceuticals,** October 4-6, 1999, Divonne-les-Bains, France. Contact: Summer School in Immunotoxicology, c/o CHRYSA LIS Preclinical Services Europe, BP 118, 69593 L'Arbresle cedex, France; Tel: +33 (0) 474 01 63 88; Fax: +33 (0) 474 01 63 99; E-mail: preclin.eu@chrysalisintl.com.
- **Respiratory Immunology,** October 10-13, 1999, La Fonda Hotel, Santa Fe, NM. Abstract deadline: July 15, 1999. Contact: Alice Hannon, Lovelace Respiratory Research Institute, P.O. Box 5890, Albuquerque, MB 87185; Tel: (505) 845-1124.
- **17th International Neurotoxicology Conference,** October 17-20, 1999, DoubleTree Hotel, Little Rock, AR. Contact: Prof. Joan Cranmer, Department of Pediatrics, University of Arkansas for Medical Sciences, 1120 Marshall, Rm. 302, Little Rock, AR 72202; Tel: (501) 320-2986; Fax: (501) 320-4978; E-mail: CranmerJoanM@exchange.uams.edu; Abstract deadline: September 1, 1999.
- **9th North American ISSX Meeting,** October 24-28, 1999, Opryland Hotel, Nashville, TN. Contact: ISSX/ACT-DCT Meeting, P.O. Box 3, Cabin John, MD 20818; Fax: 301-983-5357; E-mail: nholahan@exec.issx.org; Web site: <http://www.louisville.edu/medschool/biochemistry/ISSX-ACS>.
- **Leadership Conference: Biomedical Research and the Environment,** November 1-2, 1999, Natcher Conference Center on the National Institutes of Health Campus, Bethesda, MD. Contact: NAPE, 6410 Rockledge Drive, Suite 412, Bethesda, MD 20817; Tel: (301) 571-9790; Fax: (301) 530-8910; E-mail: nape@napenet.org; Web site: <http://www.napenet.org>.
- **Harmonization of Cancer and Non-Cancer Risk Assessment, An SOT Contemporary Concepts Consensus-Building Workshop,** November 1-3, 1999, Sheraton National Hotel, Arlington, VA. Contact: Tonia Masson at SOT Headquarters, 1767 Business Center Drive, Suite 302, Reston, VA 20190-5332; Tel: (703) 438-3115; Fax: (703) 438-3113; E-mail: tonia@toxicology.org; Web site: <http://www.toxicology.org>.
- **American College of Toxicology's 20th Annual Meeting,** November 7-10, 1999, McLean Hilton, McLean, VA. Contact: American College of Toxicology, 9650 Rockville Pike, Bethesda, MD 20814; Tel: (301) 571-1840; Fax: (301) 571-1852; E-mail: ekagan@act.faseb.org.
- **Society of Toxicology 39th Annual Meeting,** March 19-23, 2000, Pennsylvania Convention Center, Philadelphia, PA. Abstract deadline: October 1, 1999. Contact: SOT Headquarters, 1767 Business Center Drive, Suite 302, Reston, VA 20190-5332; Tel: (703) 438-3115; Fax: (703) 438-3113; E-mail: annette@toxicology.org; Web site: <http://www.toxicology.org>.
- **13th International Symposium on Microsomes and Drug Oxidations,** July 10-14, 2000, Stresa, Lago Maggiore, Italy. Contact: Professor Francesco De Mattei, Pharmacology, Via P. Giuria 13, University, Torino, Italy. Tel: (39) 011 670 7792; Fax: (39) 011 670 7788; E-mail: fdem@medfarm.unito.it or Dr. M. Di Paolo c/o M.A.F. Servizi, Torino, Italy. Tel: (39) 011 505900; Fax: (39) 011 505976; E-mail: mdipaolo@mafservizi.it.

MEDIA OF INTEREST

- **Jump Start Your Career in Bioscience,** by Chandra B. Louise, Ph.D. Contact: Peer Productions, P.O. Box 13724, Research Triangle Park, NC 27709.
- **Comprehensive Toxicology.** In print or CD-ROM. Contact: Elsevier Science, Customer Support Department, P.O. Box 945, New York, NY 10159-0945; (212) 633-3730; Fax: (212) 633-3680; E-mail: usinfo-f@elsevier.com. Visit the Web site: <http://www.elsevier.nl/locate/comptox>.
- **Current Protocols in Toxicology.** Contact: John Wiley & Sons, Inc., Attn: N. English, 9th Floor, 605 Third Avenue, New York, NY 10158-0012; Tel: (800) 825-7550; Fax: (212) 850-8888; Web site: <http://wiley.com/cp>.
- **Report on Carcinogenesis, 8th Edition.** OCR Services, Inc., PO Box 12510, Research Triangle Park, NC 27709-9686; Tel: (800) 315-3010; Fax: (919) 541-0763.
- **In Vitro & Molecular Toxicology.** Contact: Mary Ann Liebert, Inc., 2 Madison Avenue, Larchmont, NY 10538; Tel: (914) 834-3100 (within NYS) or (800) M-LIEBERT (outside NYS); Fax: (914) 834-1388; E-mail: info@liebertpub.com; Web site: <http://liebertpub.com>.
- **1999 CD-ROM of TLV's and Other Occupational Exposure Values.** Contact: ACGIH; Tel: (513) 742-2020; Fax: (513) 742-3355; E-mail: pubs@acgih.org; Web site: <http://www.acgih.org/catalog/index.htm>.

COUNCIL HIGHLIGHTS

Following are highlights of the May 26-28, 1999 Council Meeting:

1. Council approved the formation of a Student Advisory Committee to SOT Council, as an ad hoc committee for a three-year period beginning July 1, 1999. The Committee shall consist of a student representative from each of SOT's Regional Chapters. Each Chapter may devise their own mechanism for selecting their representative. **Dr. Jay Goodman** will be the Council liaison person to the Group. (See article on page 1.)
2. Council approved the formation of a Women in Toxicology Ad Hoc Work Group for a period of three years. The Group will have an open membership. **Dr. David Eaton** will be the Council liaison person to the Group and the Group will receive \$500 in administrative support from SOT Headquarters. (See article on page 3.)
3. Council approved \$5,000 in funding for the Risk Assessment Summer School for the 1999-2000 fiscal year.
4. Council approved \$1,000 funding for the Toxicology Forum.
5. Council approved \$1,000 funding for the 25th Anniversary of First International Conference on Heavy Metals in the Environment.
6. Council approved \$1,000 in funding to the Congress on Toxicology in Developing Countries. The upcoming meeting will be held in Turkey in November of 1999.
7. Council approved the SOT 1999-2000 budget.
8. Council approved the *ToxSci* proposed budget for administrative support.
9. Council approved the Membership Committee's recommendations for a new policy for accepting membership applications.
10. Council approved **Drs. Rick Schnellmann's** and **Cheryl Walker's** proposal for a Contemporary Concepts in Toxicology meeting on nephrotoxicity. (See announcement on page 4.)

SOT Council and Committee Travel Savings

SOT Council and Committees save over 50 percent on round-trip airfare by holding meetings in Baltimore. See comparison below:

Originating City	Fare To Baltimore	Fare To Dulles	Fare To National
Raleigh, NC	\$ 137	\$ 255	\$ 603
Orlando, FL	\$ 302	\$ 208	\$ 796
Phoenix, AZ	\$ 620	\$ 806	\$ 1784
St. Louis, MO	\$ 296	\$ 296	\$ 1362
San Diego, CA	\$ 628	\$ 942	\$ 2012
New Orleans, LA	\$ 434	\$ 844	\$ 1094
Saginaw, MI	\$ 736	\$ 736	\$ 840
Columbus, OH	\$ 670	\$ 228	\$ 708
Oakland, CA	\$ 621	\$ 1027	\$ 1927

All fares are based on coach class airfares and are subject to change.

Hotel food and beverages are also slightly less expensive in Baltimore.

What is Available to Regional Chapters from SOT?

Continued from page 9

3. SOT Headquarters Support:

a. Headquarters is available for consultation in:

- Meeting planing
- Media & public relations
- Education programming

b. World Wide Web

Links from the SOT web site to all Regional Chapters with a web site.

c. Coverage

- Insurance — The Regional Chapters are covered under the SOT National's Umbrella Directors and Officers Liability Insurance Policy.
- Federal Tax ID — All Regional Chapters must use the SOT National's Federal Tax ID number; the Society then files the necessary 990 Tax Form on behalf of each Chapter.

The Regional Chapters play a critical role in many of the future goals of SOT which includes a "grass roots" dissemination of the Principles of Toxicology. SOT prospers from the continued growth and strengthening of the Regional Chapters. Suggestions for additional assistance that SOT can provide the Regional Chapters are welcomed.